

# Research Posters – Handy Hints



**Caulfield**  
HOSPITAL

Part of **AlfredHealth**

# Posters templates

---

**Consider the groups involved.**

**Be mindful of logo use.**

**Use the correct template.**

# Before starting

---

**Consider your audience: their interests and/or academic level**

**Allow enough time. A good poster takes time to plan and produce**

**Know the presentation requirements including: dimensions, fixing, mandatory content, requirement of handouts**

**Know the evaluation criteria for both the abstract (if required) and the Poster**

**Consider different methods of production.**

**Ensure all authors are aware and consenting!**

# Font

**Title – 96 pt**

**Affiliations – 36 pt**

**Subheadings – 36 pt BOLD**

**Text – 24 pt**

# Title

---

**“Catchy” and informative**

**1 – 2 lines**

**Title case**

**Centred**

**Non-serif font (eg Tahoma, Arial)**

**Largest font size on poster (generally use full width of poster) at least 96 point for titles**

# Affiliations

**Title case**

**Centred**

**Non-serif font (eg Tahoma, Arial)**

**Font size: 1/2 - 2/3 of that for title**

**Authors generally in bold and may be the first line below title, by themselves**

**Use superscript numerals to identify multiple affiliations**

# Section headings

**Section headings (Introduction, Methods, etc.) in font about same size as authors/affiliations.**

**30 – 36 point**

**Can be bold.**

**Same font style as Title/Authors/Affiliations (sans serif)**

# Main text

**Main text should be readable from 1.5-3.0m (this is the smallest font)**

**18 – 24 point for text**

**Text font: with serifs (e.g. Times New Roman)**

**Consistent spacing**

**Be brief. Use figures (and tables) to reduce number of words to a max 1000 words**



# Figure and table legends

**Same font size as text**

**Can use sans serif font**

**To an “informed reader” figures and tables, with their legends, should be able to convey their main point(s) without reading everything else**

# Conclusions

---

**Restate hypothesis in brief and indicate if supported**

**Summarise main findings**

**Relate findings to work of others**

**State relevance**

**Next steps?**

# References, acknowledgements, further information

**References – standard format (can omit paper titles), be sparse (maximum of 5)**

**Acknowledgements – only if necessary**

**Further information – optional, can give an email or web address**

# Common mistakes

---

**Too much**

**Over-powering use of colours/ inappropriate colours**

**Flow of sections not obvious**

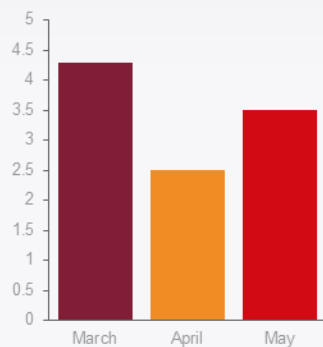
# Chart Colours

---

**The following slides contain sample charts provided by Alfred Health to ensure consistency in the presentation of charts.**

# Sample Charts

Column Graph



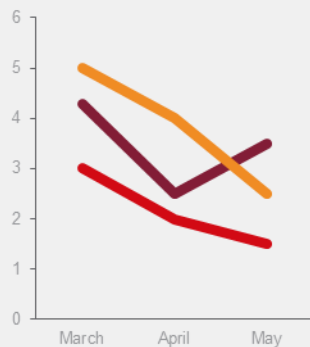
Doughnut graph



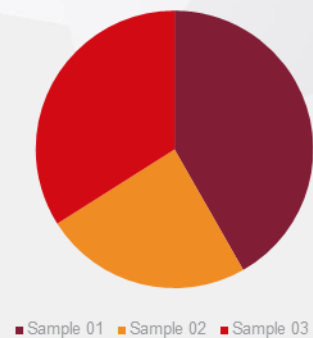
Colours



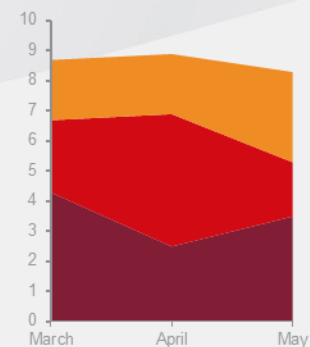
Line graph



Pie graph

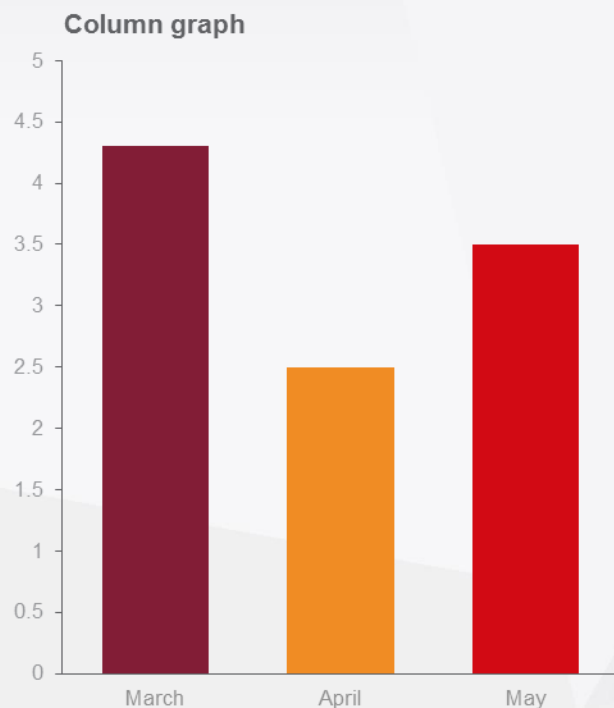


Area graph



# Sample Chart with text

---



**First level**

Second level

- Third level

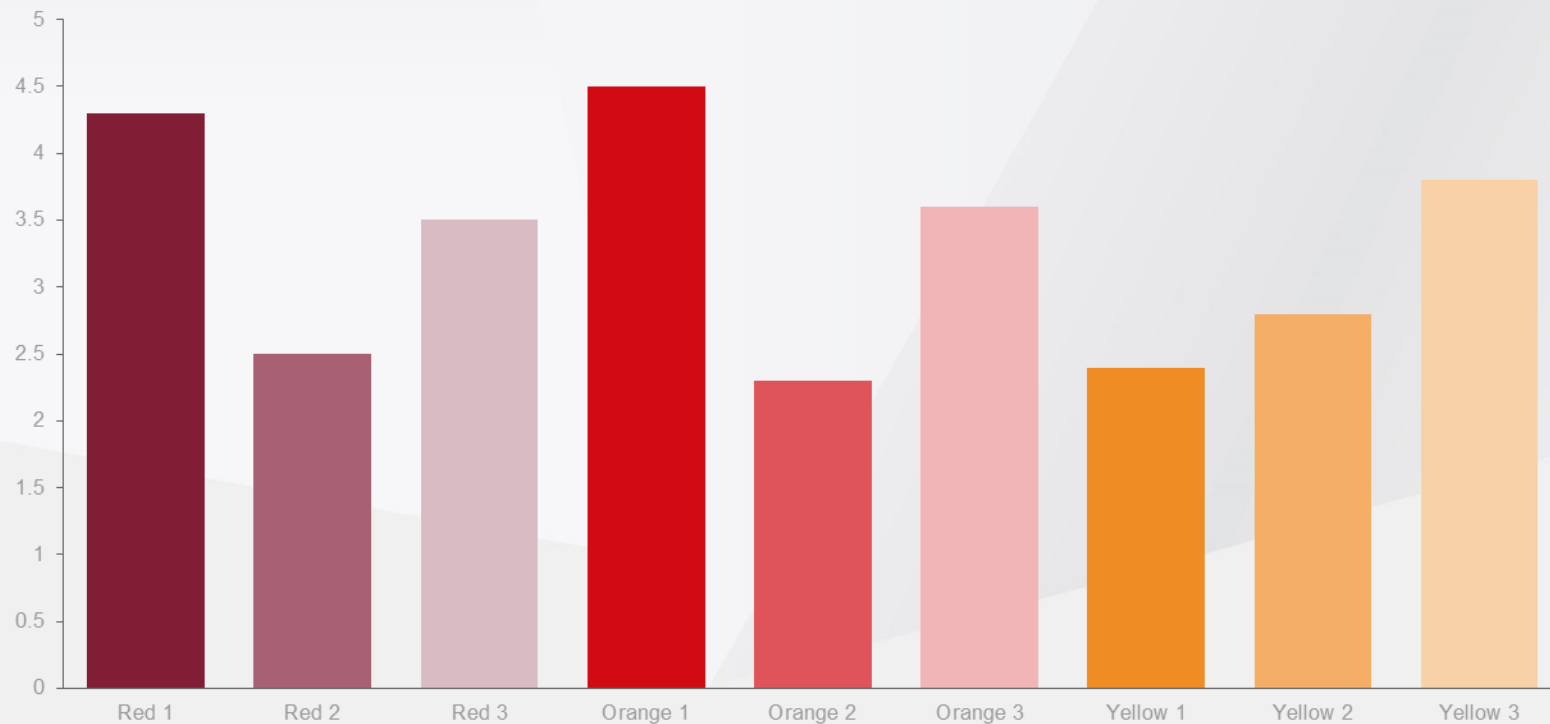
Fourth level

- Fifth level

Sixth level

# Sample Chart

Column Graph



Chart