

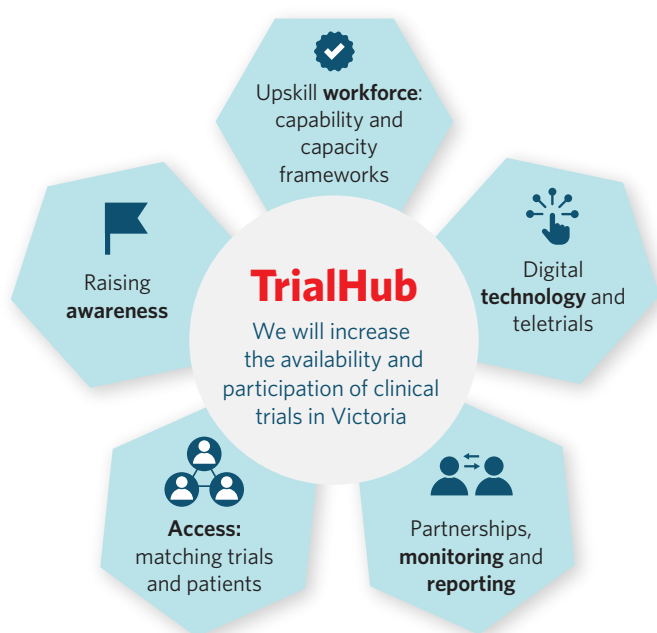
TrialHub in action

Allowing patients to participate in clinical trials closer to home

How it works

A metro hospital with a large clinical trial portfolio, Alfred Health, partners with outer metro, regional and rural hospitals to improve or establish their own independent and sustainable clinical trial unit.

What we do

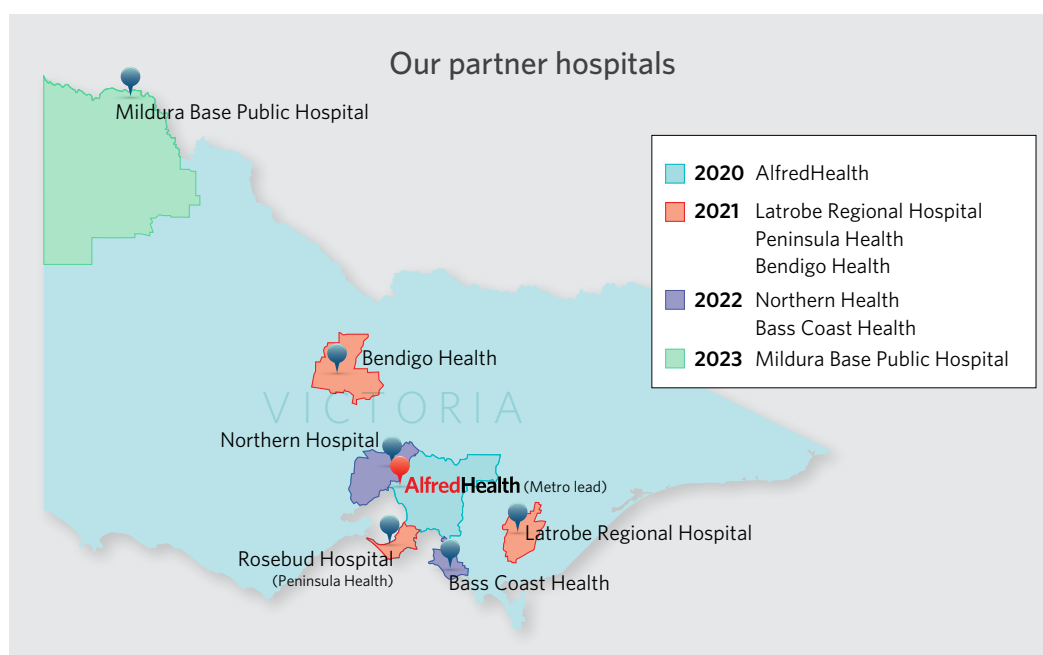


Our impact so far ...

- We have seen significant growth in clinical trial capacity across all partner sites, including more commercial studies
- Nine unique teletrials have opened with recruitment ongoing
- We've supported the increase in the overall multi-disciplinary clinical trial workforce
- We've founded a Victorian Rare Cancer Alliance to build rare cancer clinical trial capacity and availability in regional and rural Victoria
- Five clinical trial participants are on the ground acting as ambassadors to improve awareness of clinical trials in their region
- Total participants recruited onto trials have increased since 2020
- Clinical trial pharmacists at all sites have either completed, or will start, our unique clinical trial pharmacy micro-credentialing program
- We published an Australian-first Trial Capability Framework, now used by Queensland, Northern Territory and Victorian health services.

For more information please call (03) 9076 5040 or email TrialHub@alfred.org.au

Our partner hospitals



"We are now at the half-way point of the TrialHub program. Thanks to the commitment, dedication and hard work of executive teams, management, clinical trial workforce, partners, sponsors, and trial participants, we are reaching our shared goal of more clinical trials for regional and rural patients closer to home."

Anne Woollett,
TrialHub Director



TrialHub in action

What others say about TrialHub's impact ...

"The treatment that got rid of my cancer was once a clinical trial, now I want to play a part in helping the next generation with continuing to advance cancer treatments. It has been great being able to participate in this trial because it is an easy 40-minute drive from home to LRH and only 15 minutes from my work."

Nick Johnson

Latrobe Regional Hospital's first ever clinical trial participant

"This invaluable guidance for our newly-established cancer clinical trials unit has enabled greater recruitment to partnered studies between the Northern Health trials unit and The Alfred Hospital. This support has been vital to reducing inequities and improving access to high quality and safe clinical trials for patients living in our catchment communities."

Dr Belinda Lee

Head of Cancer Clinical Trials
Northern Health

"TrialHub has mentored the leadership team to undertake the key initial steps towards the accreditation of our health service for the provision of clinical trial services. Through this executive mentoring, we now have a clear plan and understanding to embed clinical trial services into existing clinical and corporate governance systems."

Matthew Jukes

Acting Chief Executive Officer
Mildura Base Public Hospital

"The development of the first oncology research fellow position with support and mentoring provided through TrialHub has created an opportunity that allowed this fellow to live and work regionally. The retention and development of staff enhances the sustainability of the clinical trial service."

Peter Faulkner

Chief Executive Officer
Bendigo Health
