



How to use Telehealth

1 Go to our website

Type into your web browser

▶ [Alfred.org.au/telehealth](https://alfred.org.au/telehealth)

or

Use a direct link sent to you
eg <https://videocall.direct/neurosurgery>

or

Scan in the QR code with
your mobile camera



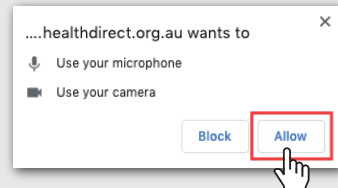
2 Test your devices or start a call



or



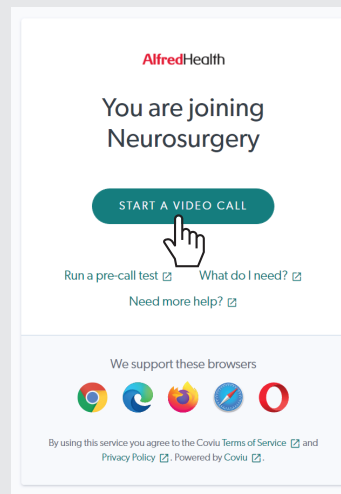
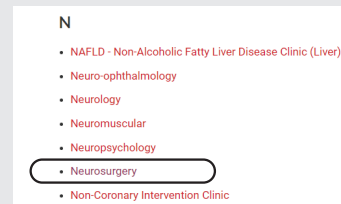
Click **Allow** so telehealth
can use your devices



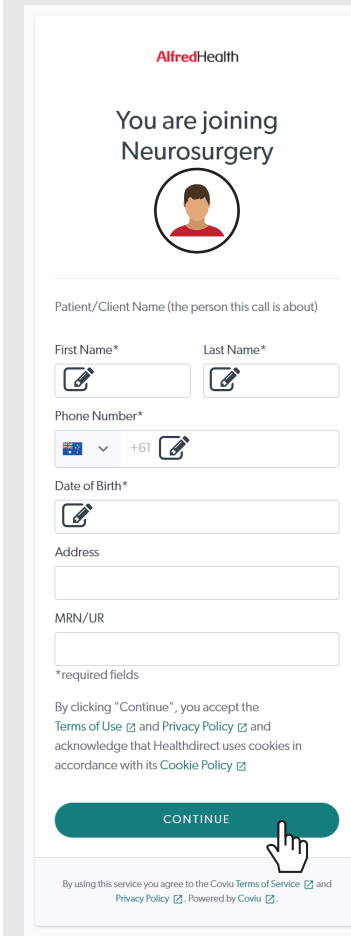
Your face will
be on camera



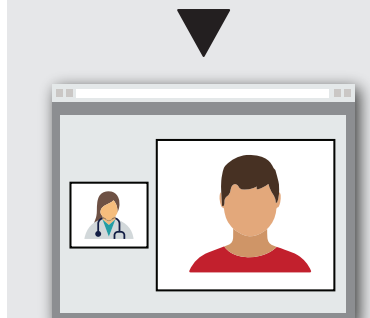
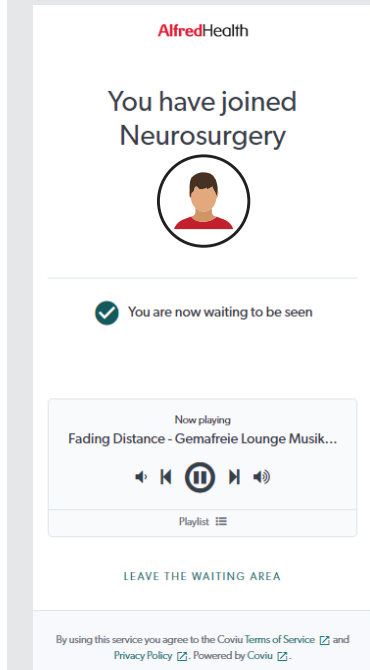
3 Find your clinic via our webpage



4 Sign in



5 Waiting Room



Help and assistance

Call **9076 3302**



Need an interpreter?

Ask us to organise an
interpreter for you.