



Pharmacy Locations



John Silverii's Pharmacy

333 St Georges Rd, Fitzroy North VIC 3068



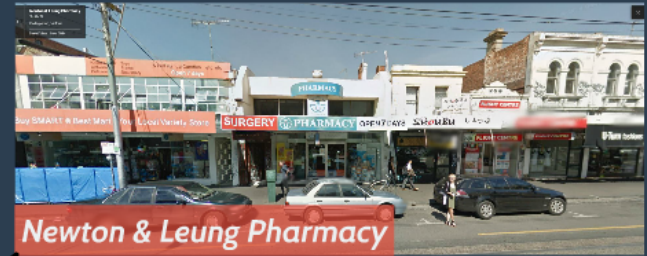
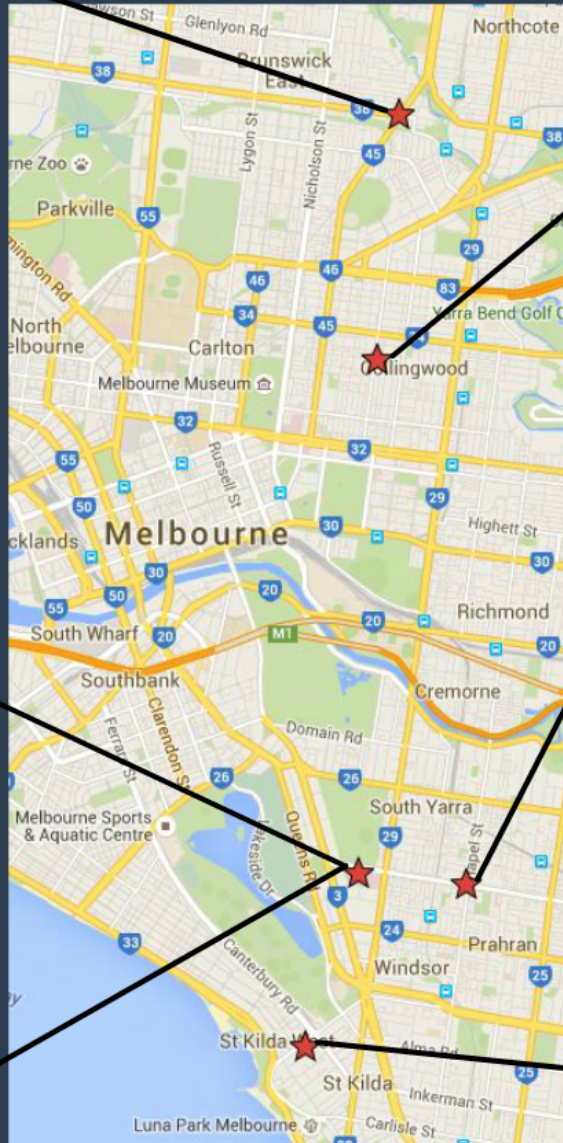
Healthsmart Pharmacy

Main entrance, The Alfred Hospital, Commercial Rd, Melbourne VIC 3004



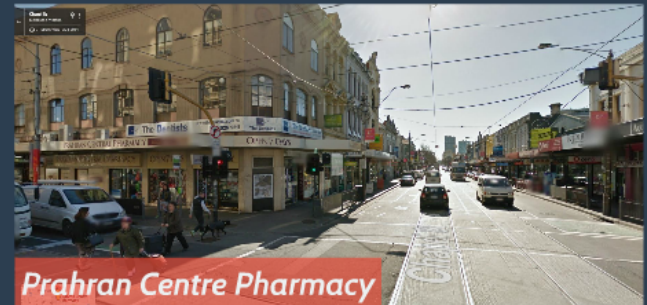
Alfred Clinical Trial's Pharmacy

Lower ground floor, The Alfred Hospital, (Use lifts at Main entrance)



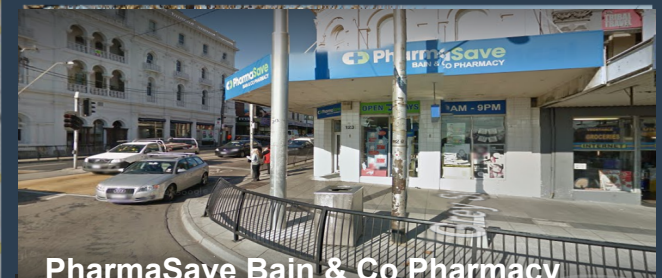
Newton & Leung Pharmacy

272 Smith St., Collingwood VIC 3066



Prahran Centre Pharmacy

229/235 Commercial Rd, South Yarra VIC 3141



PharmaSave Bain & Co Pharmacy

123 Fitzroy St St Kilda VIC 3182



Pharmacy Locations



John Silverii's Pharmacy

333 St Georges Rd, Fitzroy North VIC 3068



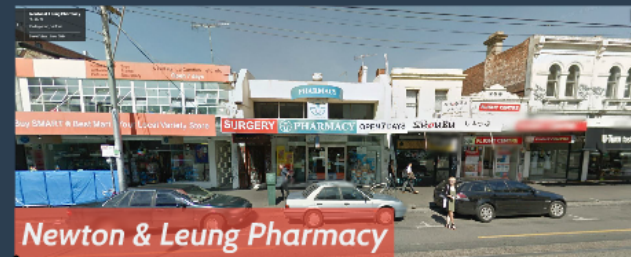
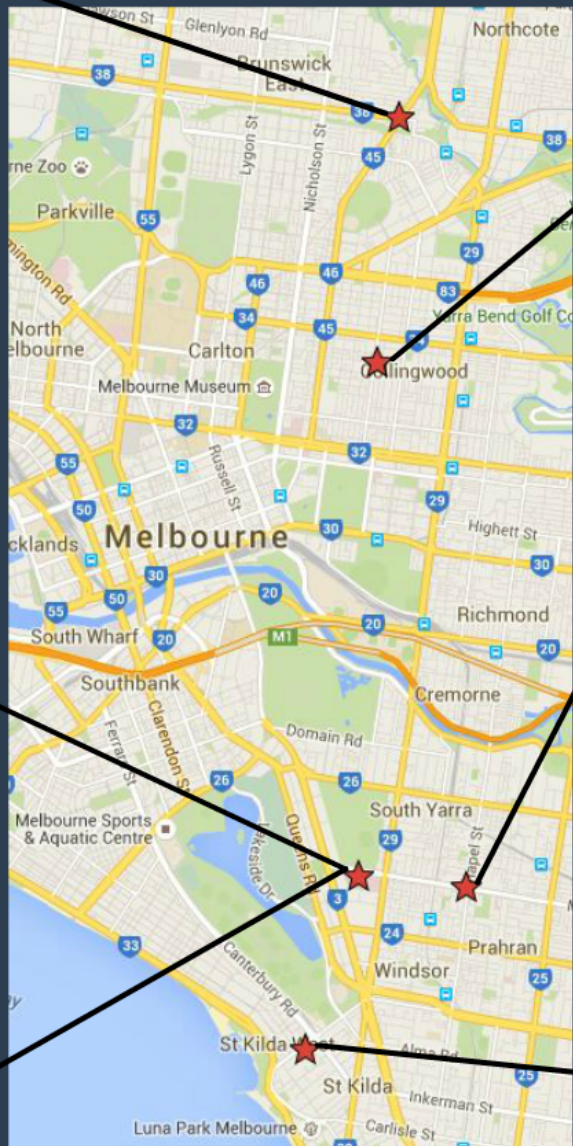
Healthsmart Pharmacy

Main entrance, The Alfred Hospital,
Commercial Rd, Melbourne VIC 3004



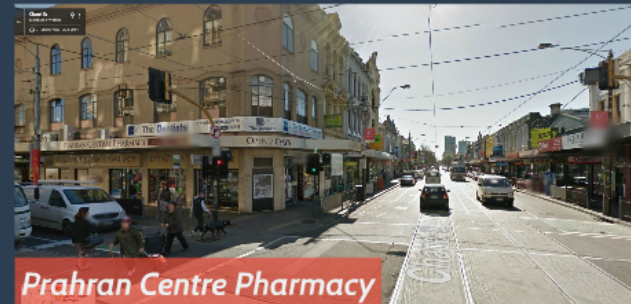
Alfred Clinical Trial's Pharmacy

Lower ground floor, The Alfred Hospital,
(Use lifts at Main entrance)



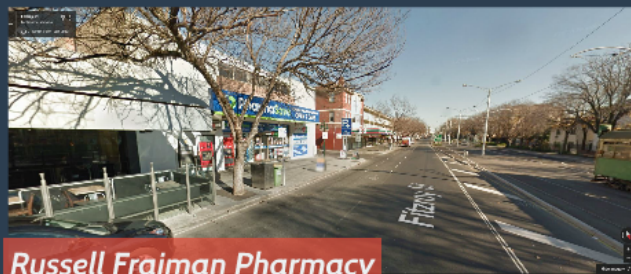
Newton & Leung Pharmacy

272 Smith St., Collingwood VIC 3066



Prahran Centre Pharmacy

229/235 Commercial Rd, South Yarra VIC 3141



Russell Frajman Pharmacy

77 Fitzroy St, St Kilda VIC 3182