

# 5<sup>th</sup> Floor News

*The 5th Floor is changing...*



theAlfred

Edition **6**  
December 2017

## Relocating Respiratory Medicine

### *Dear patients, families, carers and staff*

Last month we released the design for our Respiratory Medicine Services on Level 2, which will now extend from the Philip Block through to the East Block at The Alfred.

#### **Design features**

The floor design includes some excellent improvements that will add to our already high-quality service.

As you can see from the proposed layout on pages 2-3, much of the feedback received over the past few months has been addressed, with features including:

- better facilities that improve patient access and comfort
- continued close proximity to clinical areas and staff
- improved infection prevention through isolation rooms and two separate entrances
- new and modern surfaces that are easy to clean and maintain.

Importantly, **the new design allows for a 20 per cent increase in clinical capacity**, supporting future growth for our service.

The Sleep Laboratory (page 4) will move to a new purpose-built facility on the Ground Floor of The Alfred Centre, providing all the important facilities required.

#### **Minimising cross infection**

Infection prevention is a main concern for our respiratory patients. Over the past few months our clinical teams have focussed on determining the best pathways to minimise the risks from cross infection in our new relocation.

These pathways are informed by the new proposed cystic fibrosis control guidelines for infection prevention and build on current practices to keep patients safe. Also, they take advantage of the newly created isolated rooms in the East Block to minimise cross infections.

#### **Next stages**

Preparations are underway for the next phase with tender processes under way for construction works. Plans are in place for building to start in early 2018. Also, early in the new year, we will review work flows and scheduling in these new locations to better support patient experiences.

We will continue to work together with patients and families to make our clinics efficient and safe.

#### **Thank you**

As we head towards the end of the year, our thanks go to the many patients and clinicians who gave of their time to support the relocation of our service and ensure the high quality of care was retained. We are particularly grateful to our Patient Reference Group, whose insights both shaped and improved the clinic designs for Level 2.

Wishing you all a safe and healthy festive season.

#### **Prof Trevor Williams**

Director General Respiratory & Lung Transplant

#### **Prof Robyn O'Hehir**

Director Allergy, Immunology & Cystic Fibrosis

#### *Watch our Webcast*

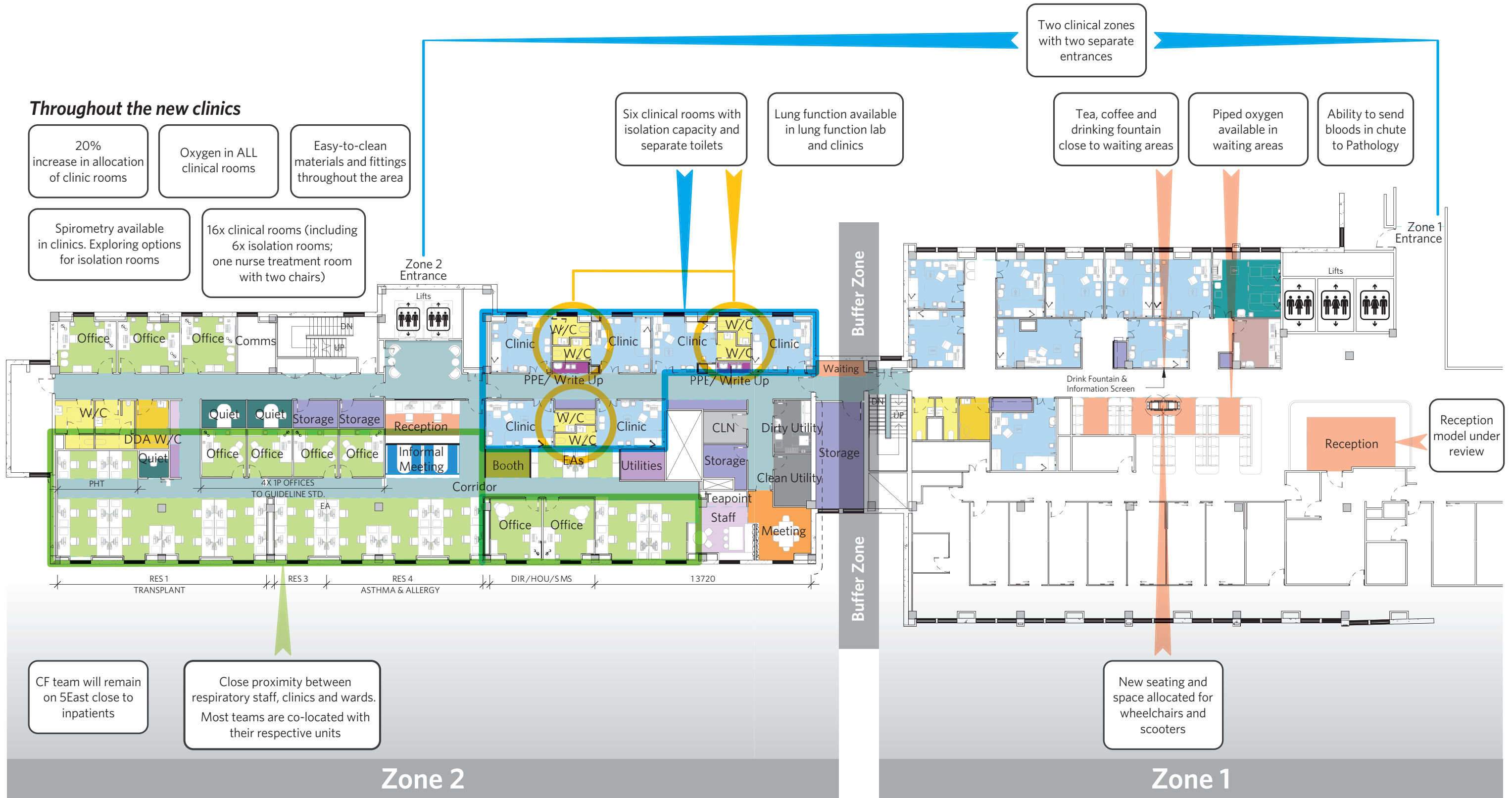
*Alfred Health clinicians explain the new clinical area for respiratory Medicine. Streamed live in early November, this webcast is now available on demand at [alfredhealth.streaming.net.au](http://alfredhealth.streaming.net.au)*

## Design for Respiratory Medicine Level 2

Patient and clinician feedback have shaped and developed the clinic design on Level 2 to ensure we continue to provide the highest level of patient care.

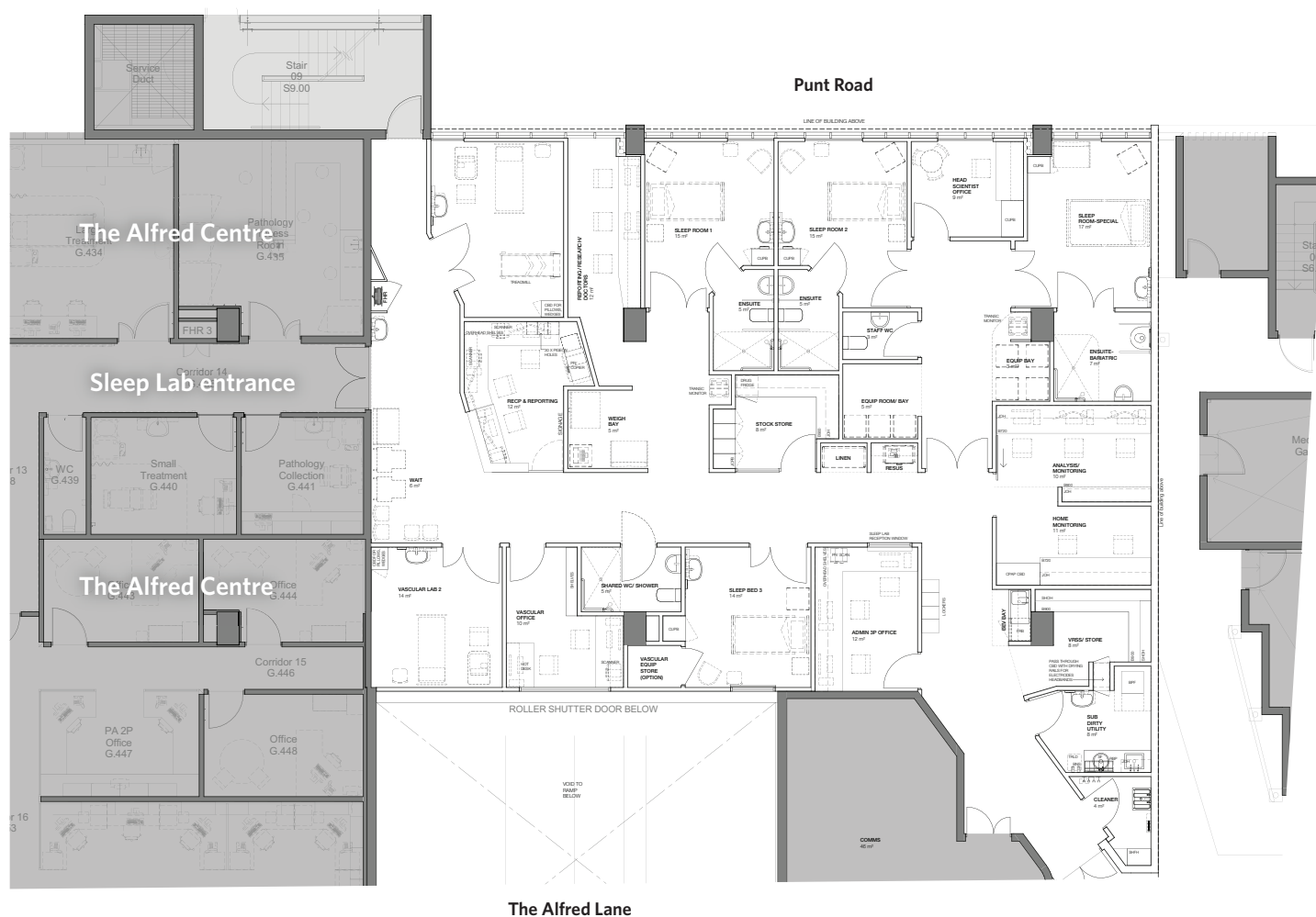
### Throughout the new clinics

- 20% increase in allocation of clinic rooms
- Oxygen in ALL clinical rooms
- Easy-to-clean materials and fittings throughout the area
- Spirometry available in clinics. Exploring options for isolation rooms
- 16x clinical rooms (including 6x isolation rooms; one nurse treatment room with two chairs)



Workspaces - 54 Clinical Support Reception / Waiting Amenities

## Purpose-built Sleep Laboratory, Ground Floor, The Alfred Centre



### Keeping up to date

Keep up to date with the latest news as we progress with the 5th Floor Relocation Project.



Visit our website: [alfredhealth.org.au/consult5floor](http://alfredhealth.org.au/consult5floor)



Read the regular editions of 5th Floor news (online and at reception and waiting areas on 5th Floor)



Email your questions and comments to [patientfeedback5floor@alfred.org.au](mailto:patientfeedback5floor@alfred.org.au)