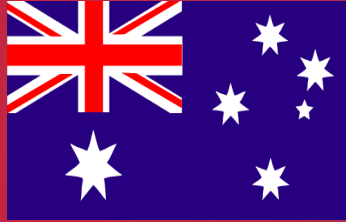


ALFRED HEALTH 2026 INTERN INFORMATION SESSION

Ms Amy Tran

**Recruitment Specialist,
Medical Workforce**

Introduction & Session Overview



Acknowledgment of Country

Alfred Health respectfully acknowledges the Traditional Custodians of this land, the people of the Kulin Nations. We pay our respect to their Elders, past and present. We acknowledge and uphold their continuing connection to land, skies and waterways.

Session Overview

- Welcome
- Why Alfred Health?
- Information around the National Framework for Prevocational Medical Training (NFPMT)
- Intern Experience, Wellbeing & Education
- Rotations and career pathways
- Critical Care, Surgery, Psychiatry & Medical specialties
- Key changes to the PMCV Intern Match



Career Pathways Virtual Discussions

At the conclusion of the live session, please join the virtual discussion for your preferred career pathway by using the link you have received. You may attend multiple sessions and the links will also be provided in the chat.

The virtual discussions we have available are:

- Surgical
- Critical Care
- Medical & Psychiatry



Dr Tony Kambourakis

**Chief Medical Officer,
Alfred Health**

Welcome

About Alfred Health

Alfred Health is one of Australia's leading healthcare services.

We have a dual role:

- Caring for more than 770,000 locals who live in Melbourne's inner-south; and
- Providing health services for Victorians experiencing the most acute and complex conditions through 18 statewide services.

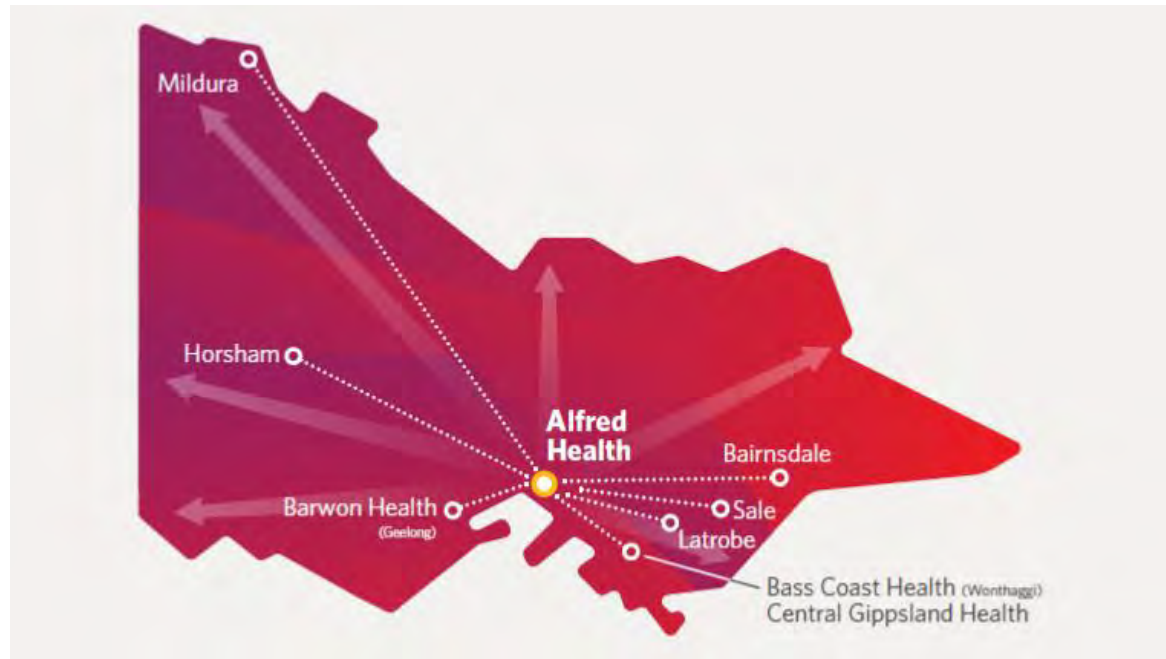
Our three hospital campuses – The Alfred, Caulfield Hospital and Sandringham Hospital – as well as numerous community-based clinics, provide lifesaving treatments, specialist and rehabilitation services through to accessible local healthcare.

We care for a wide range of people, from all age groups.

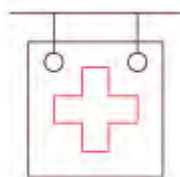


Our purpose

To improve the lives of our patients and their families, our communities and humanity.



Highlights

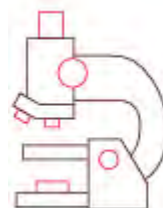


121,829
Emergency
presentations

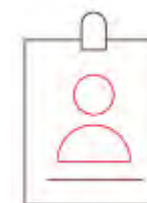


11,828 Planned
surgeries performed
from waiting list

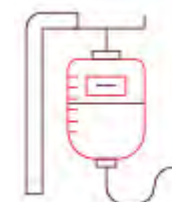
Specialist clinic appointments	2021-22	2022-23	2023-24
Face-to-face	132,042	200,031	219,697
Telehealth video	44,180	47,072	53,060
Telephone	88,849	35,684	38,765
Total activity	265,071	282,787	311,522



654 Clinical
trials open



11,424
Employees



20,420
ICU occupied
bed bays

Culture, education and training

Wide variety of clinical experiences.

Excellent supervision and supportive culture.

Many training opportunities – over 40 specialist training programs.



Dr Melissa Fitzgerald

**Director of Prevocational
Medical Education**

**Specialist Physician in
General Medicine**

Why Alfred Health? Prospective Interns 2026

Overview

1. Who are we?
2. What do we do?
3. What does this mean for you?
4. What can we do for you?
5. The National Framework for Prevocational Medical Trainees (NFPMT)



Who are we?

- One of Australia's leading healthcare service.
- Focus on the safety and wellbeing of staff and patients.
- Doctors in training are a vital component enabling us to deliver high quality patient care.



What do we do?

National Service - Paediatric Lung Transplant Service

Statewide services provide specialist care for all Victorians

1. Bariatric Service
2. Clinical Haematology Service and Haemophilia Service
3. Cystic Fibrosis Service
4. Emergency and Trauma Centre
5. Heart and Lung Transplant Service
6. Hyperbaric Medicine Service
7. Major Trauma Service
8. Malignant Haematology and Stem Cell
9. Problem Gambling and Mental Health Program
10. Psychiatric Intensive Care Service
11. Sexual Health Service
12. Specialist Rehabilitation Service
13. Victorian Adult Burns Service
14. Victorian ECMO Service
15. Victorian HIV/AIDS Service
16. Victorian Melanoma Service
17. Victorian Neuropathology Laboratory Service
18. Voluntary Assisted Dying Statewide Pharmacy Service

Clinical services

- Aged care
- Allied health and nursing services
- Cancer care (BMT, radiotherapy, oncology, haematology, melanoma, cancer surgery)
- Cardiothoracic services (heart and lung transplantation, cardiology, cardiac surgery, cardiac rehabilitation, respiratory medicine, thoracic surgery, adult cystic fibrosis)
- Emergency medicine (intensive care, burns and adult major trauma)
- Ear, nose and throat
- Gastrointestinal (gastroenterology, gastrointestinal surgery)
- General medicine
- General surgery
- Neurosciences (neurology, neurosurgery, stroke services)
- Ophthalmology
- Orthopaedics
- End of life care (Palliative care, advanced care planning, VAD)
- Pathology (anatomical, clinical biochemistry, laboratory haematology, microbiology)
- Pharmacy
- Psychiatry (adult, child, adolescent, youth, aged)
- Radiology and nuclear medicine
- Rehabilitation (ABI, amputee, cardiac, spinal, neurological, orthopaedic, burns)
- Renal services (nephrology, haemodialysis, renal transplantation)
- Specialist medicine (asthma, allergy and clinical immunology, dermatology, endocrinology/diabetes, hyperbaric, infectious diseases, rheumatology)
- Specialist surgery (dental, faciomaxillary, plastic, vascular)
- Urology

What does this mean for you?



New, minimally invasive epilepsy surgery is changing lives

7 April 2025

The Alfred is the first hospital in Victoria and the second in Australia to offer a new and highly effective kind of brain surgery to treat previously 'inoperable' drug-resistant epilepsy.

epilepsy neurosurgery patients



New imaging technology cuts treatment times for patients

7 April 2025

Cancer patients undergoing radiation therapy at The Alfred are now experiencing shorter treatment times, thanks to the arrival of state-of-the-art imaging technology.

cancer patients radiation therapy



Artificial skin breakthrough for Melbourne patient

25 October 2024

In a first-of-its-kind adult case, a Melbourne man has had his burns repaired with bioengineered skin, decreasing his need for skin grafting and significantly reducing his risk of deadly infection.

burns clinical trials patients



Breakthrough joint replacement antibiotic study named Trial of the Year

20 May 2024

A study investigating how effective additional antibiotics are in the prevention of post-joint surgery infection, undertaken by Alfred Health and Monash University, has been awarded this year's prestigious Australian Clinical Trials Alliance (ACTA) Trial of the Year...

clinical trials infectious diseases research & innovation

First in the world melanoma trial to breakthrough barriers

24 February 2023

cancer cancer research clinical trials melanoma

A first in the world trial looking at new treatment options for patients with melanoma that has spread to the brain is set to commence at The Alfred, potentially helping patients add years to their lives.

The BETTER trial will investigate whether a specific immunotherapy drugs and targeted
Accessibility Improve outcomes for patients with melanoma brain metastases, who often have a poor



Melbourne dad saved by Australian-first trial

01 May 2023

heart ICU patients

When 43-year-old Melbourne dad Mark Wohlers suffered a cardiac arrest last year, it was the swift emergency response and an Australian-first clinical trial that gave him a second chance at life.

The Alfred and Ambulance Victoria-led trial saw Mark placed on an advanced form of life support at the roadside – a technique commonly only offered in
Accessibility is – to take over the function of his



Source first: Dr David Anderson and Dr Stella Robinson from Lakeside (SOMO) life support to the streets in an Alfred Health-led demonstration of 'Victor' (Victor)

'Heart in a box' now a proven gamechanger

21 April 2023

clinical trials heart research & innovation

Two Alfred heart experts have today declared a new method of donor heart preservation a gamechanger for heart transplantation in Australia and New Zealand.

Presenting the findings of their two year study, Prof David Kaye and Prof David McGiffin have told the International Society for Heart and Lung



meeting in Denver that hypothermic

What can we do for you?

1. Safe and supportive culture with a focus on your wellbeing

- *“Everyone I have worked with has been patient, generous with their time, and wants the best for their patient. I haven’t had anyone rude, and I think that’s reflective of the culture and great camaraderie at Alfred Health”*
- *“The consultants encourage you to ask questions all the time. You are very much a part of a team”*

2. Outstanding supervision

- *“100% of your shifts you have great supervision” E.g. clinical supervisor, Term Supervisor, SIT, DPME, DCT, DMS*
- *“When I felt stressed, I had support, when I felt confident to push myself and upskill, I could, knowing no matter what, I had help readily available”*

3. Unparalleled clinical exposure during your internship

- *“You get to experience some of the most unique areas of medicine as an intern.”*
- *“How you preference your own rotations means you actually get rotations in specialties such as lung transplant, radiology, trauma, acute psychiatry”*

What can we do for you?

4. Countless education opportunities

- *“Intern teaching is weekly, protected and paid with topics relevant, engaging and lunch is provided. They also seek our feedback to make sure it is the best it can be. In addition, there is HMO education you can attend weekly and weekly unit specific education. We are always strongly encouraged to attend by our team.”*
- *Wednesday 1.00-2.00pm- lunch provided, in person at The Alfred*
- *SH and CH in person education also provided and opportunity to log on remotely for The Alfred or view recordings*
- *Topics are mapped to a curriculum with consultants and fellows educating with a mix of lectures and practical skill sessions*

5. Professional development opportunities

- *Including leadership, communication, deteriorating patient, suturing master classes, abdominal laparoscopic workshops, and family meeting workshops*
- *“The communication and deteriorating patient workshops are amazing! It made life on the wards so much easier.”*

6. Amazing research opportunities in numerous areas



What can we do for you?

7. Career Progression

- Physician Program
- Prevocational Surgical Program
- Critical Care
- Psychiatry
- Other including Radiation Oncology, Dermatology, Radiology etc.
- Support if unknown



“The MEU and MWF are so approachable and involved. It makes transitioning from medical student to intern so much easier, and the one-on-one career chats are so helpful for deciding training pathways and your career.”

Alfred Health JMS Society

Alfred Resident Doctors' Society

“Excellent social and networking opportunities”

A poster for the Alfred Resident Doctors' Society (ARDS). The top half features a photograph of the Alfred Hospital at night with a red overlay. The text 'Welcome to ARDS' is in large red letters, and 'The Alfred Resident Doctors' Society' is in white. Below this is a red circular logo with 'ARDS' and 'ALFRED RESIDENT DOCTORS' SOCIETY'. The bottom half is a dark grey section with white text. It lists 'OUR PILLARS OF ACTION' with three numbered items: 01 Advocacy & Support, 02 Education, and 03 Social Celebration. To the right is an 'ABOUT US' section. Below that is a 'STAY UP TO DATE' section with links to Facebook and Instagram. At the bottom left is a 'JOIN US' section with a QR code and contact information. At the bottom right is a 'More Information' link. The Alfred Health logo is in the bottom right corner.

Welcome to ARDS

The Alfred Resident Doctors' Society

ARDS
ALFRED RESIDENT DOCTORS' SOCIETY

OUR PILLARS OF ACTION

01 Advocacy & Support
ARDS representatives directly liaise with hospital executive bodies to improve our experiences and advocate for issues impacting RMOs

02 Education
Supporting our doctors in training through lectures and revision programs, GSSE study intensives and speciality-themed training series

03 Social Celebration
Bringing together all Alfred RMOs for frequent gatherings at local venues, as well as lunches for everyone to enjoy

ABOUT US
The Alfred Resident Doctors' Society (ARDS) is the representative body for junior medical staff at Alfred Health. ARDS is a society of volunteer JMOs and Registrars that aim to create an enjoyable and safe workplace for our members by advocating on behalf of our members and running both educational and social events.

STAY UP TO DATE

ARDS Facebook
facebook.com/alfredRMO

ARDS Doctors Group
facebook.com/groups/610050306040145

ARDS Surgical Interest Group
facebook.com/groups/2733251266788399

ARDS Instagram
instagram.com/ards.alfred

JOIN US
\$65.00 per quarter
ards.wildapricot.org/join

Get in touch:
ards.alfred@gmail.com

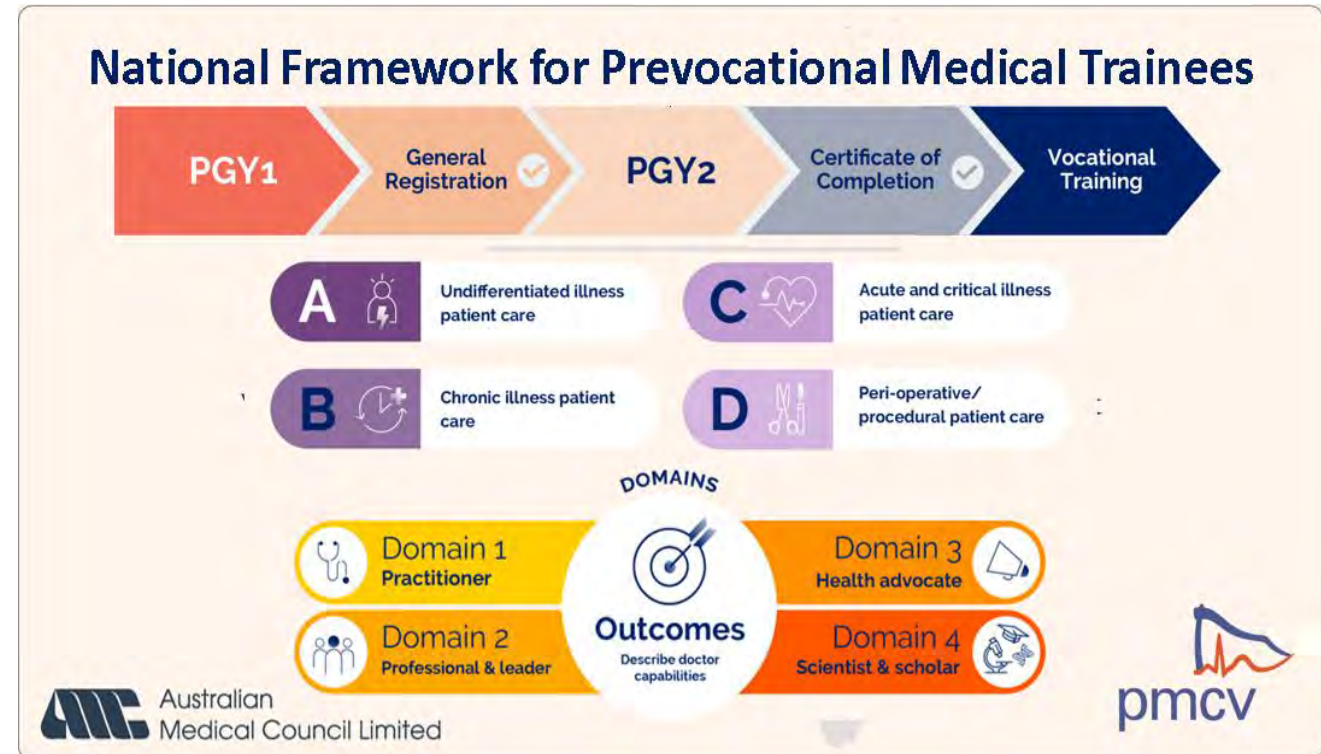
ABN 98 529 853 741
Registration A0109429M

More Information:
ards.wildapricot.org/join

Alfred Health

National Framework for Prevocational Medical Trainees (NFMPT)

- New in 2024 - 2-year PGY 1 + PGY 2 program
- Rotations based on clinical experiences (e.g. Acute, Chronic, Undifferentiated, no longer ED/Med/Surg)
- Beginning of term discussion
- Mid and end of term assessment – competency based
- New Entrustable Professional Activities and e-portfolio Clinical Learning Australia (2026)
- Alfred Health offer PGY2 and BPT1 places (concurrently obtain both NFMPT Certificate and BPT1)



Who should apply?

- Those eligible
- Dedicated to providing the highest quality of care to our patients
- Willingness to learn and a growth mindset
- Team player
- Think Alfred Health will help you to achieve your goals in successfully completing your Internship



Dr Nilesh Rohit

Current Alfred Health Intern

The Intern Experience

Why Alfred Health?



Getting your head around the junior doctor life

Med student to Intern

- Increased responsibility
- Fully part of the team
- Trusted



How to prepare

- Professionalism
- Reflection (strengths and weaknesses)

What could be good to do now

- Procedures with supervision as much as possible
- Watch your interns closely, how do they prioritise/delegate/communicate
- Pay attention to short cuts

General Advice

- Ask x1000
- Be the person you want to work with (**LEARN NAMES**)

The rollercoaster so far

Emergency Department (Pretty acute)

Benefits:

- Shift work, 4-day weeks (NO NIGHTS!)
- Clinically minded work at all times/great procedures if you engage
- Awesome team atmosphere

Challenges:

- Large ED/trauma unit, must be driven to experience higher acuity presentations
- Shift work

Bethlehem Palliative Care (Not so acute)

Benefits:

- Free parking/Salary packaging
- Rare presentations
- Mon-Fri hours

Challenges:

- Job prioritisation
- Confronting discussions/situations



GOOD LUCK!

What I wish I knew before starting

- We are all human.
- The job is demanding but not impossible.
- You are ready for this.
- Many did this before you, many will do it after you.
- Traffic in Melbourne is terrible.



Wherever you end up will be the start of a new adventure.

Dr Laura Davies

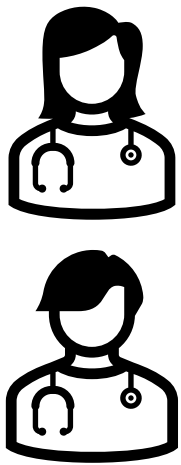
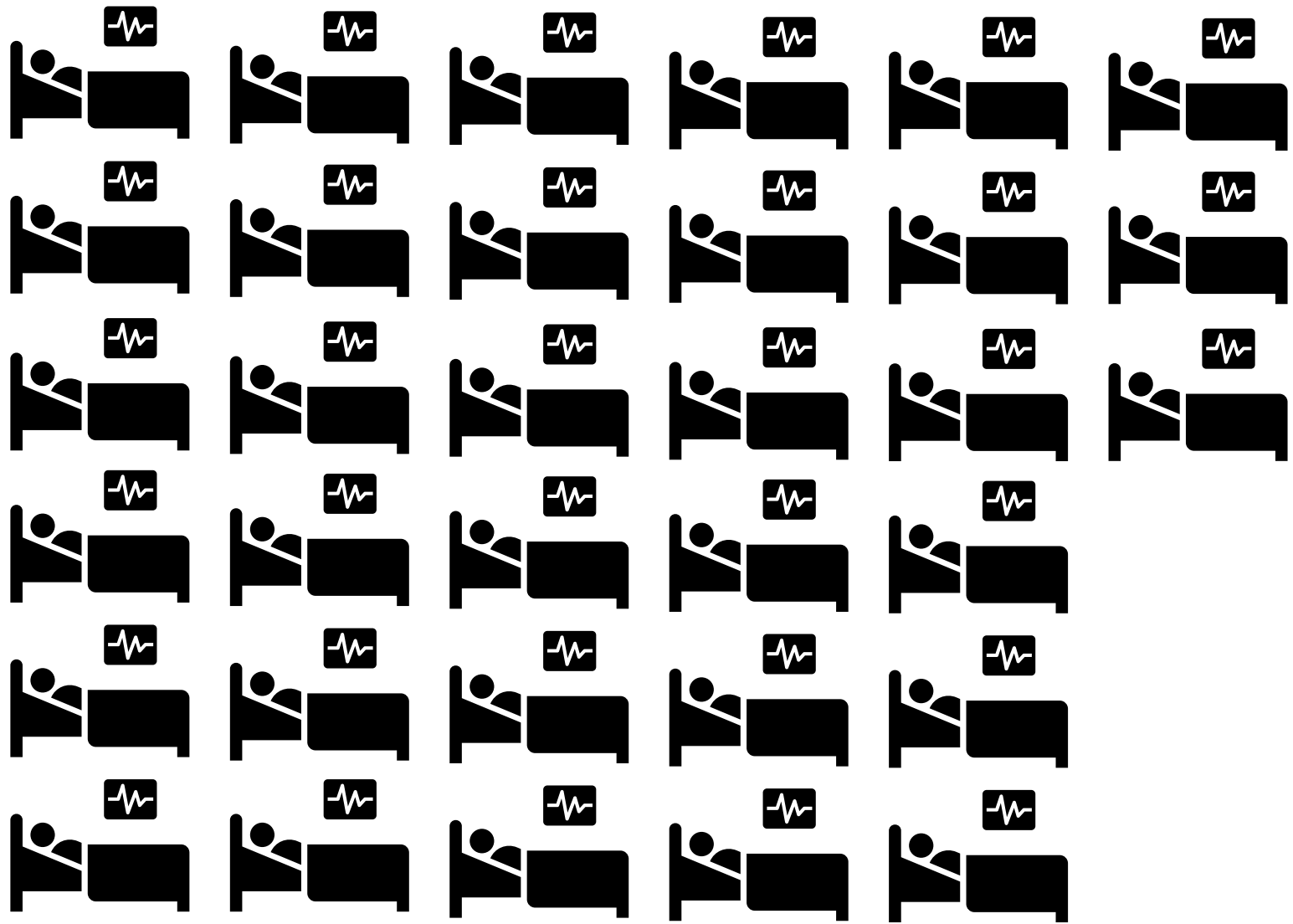
Current Alfred Health Intern

The Intern Experience

Emergency & Trauma Centre

*Prompt assessment
and high-quality care.*







Reasons to come to Alfred Health



Pharmacists

- The best thing that will ever happen to you



Rotation variety

- trauma, CAT psych, stroke, urology, vascular, radiology, dermatology



Education

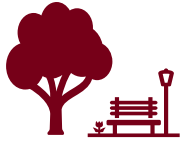
- Protected teaching
- Teaching for HMOs



Top-tier seniors

- Horizontal hierarchy and mentoring
- Support of individual learning goals & research

Extras



Surrounded by parks



New café area



Rooftop doctor's residence



Amazing bike lockers and car parking \$12/day



Other food options 2 min walk away

Tips before internship

- Don't panic – you'll figure it out when you get there
- Enjoy the break
- Practise differential lists





LOW CLEARANCE
3.4 m



Dr Laura Scott

**Supervisor of Intern Training
Emergency Physician**

Intern Health, Wellbeing and Junior Medical Staff Education

What we'll cover

- **Intern and HMO Medical Education**
- **Health and Wellbeing**



*Some distressing themes are discussed in the wellbeing section if you need to pause.

Our Medical Education Team

Director of Medical Services (DMS)

Dr Anna Korin

Director of Clinical Training (DCT)

A/Prof Laila Rotstein

Director of Prevocational Medical Education (DPME)

Dr Melissa Fitzgerald

Supervisor of Intern Training (SIT)

Dr Laura Scott

Prevocational Surgical Supervisor

Mr Andrew Packiyanathan

Director Medical Workforce

Jonathan Oldham

Manager Learning and Development

Sarah Hill

Medical Education Officers

Anthony Gibson

Sarah Loschiavo

The Medical Education Team supports the learning, professional development and wellbeing of prevocational medical staff. We coordinate your orientation program, weekly education sessions and the provision of regular feedback from your supervisors.

Medical Education

Orientation Program

National Framework

Rotations

- Liaison with Medical Workforce
- State Services

Intern Education Program

- Weekly
- Variety of topics relating to intern rotations/role
- Co-ordination of assessments
- Completion of intern year requirements

HMO Education Program

- Weekly
- Able to attend if clinical duties allow



Medical Education

Clinical skills workshops and simulation

- Suturing Masterclass
- Communication Skills Workshop
- Laparoscopic Workshop

Online learning modules

- Mandatory
- Recommended/General

Other education opportunities

- Each unit has its own education program

Feedback

- Regular formal feedback from your supervisor
- Regular feedback from you
- Supervisors are well supported to best support you

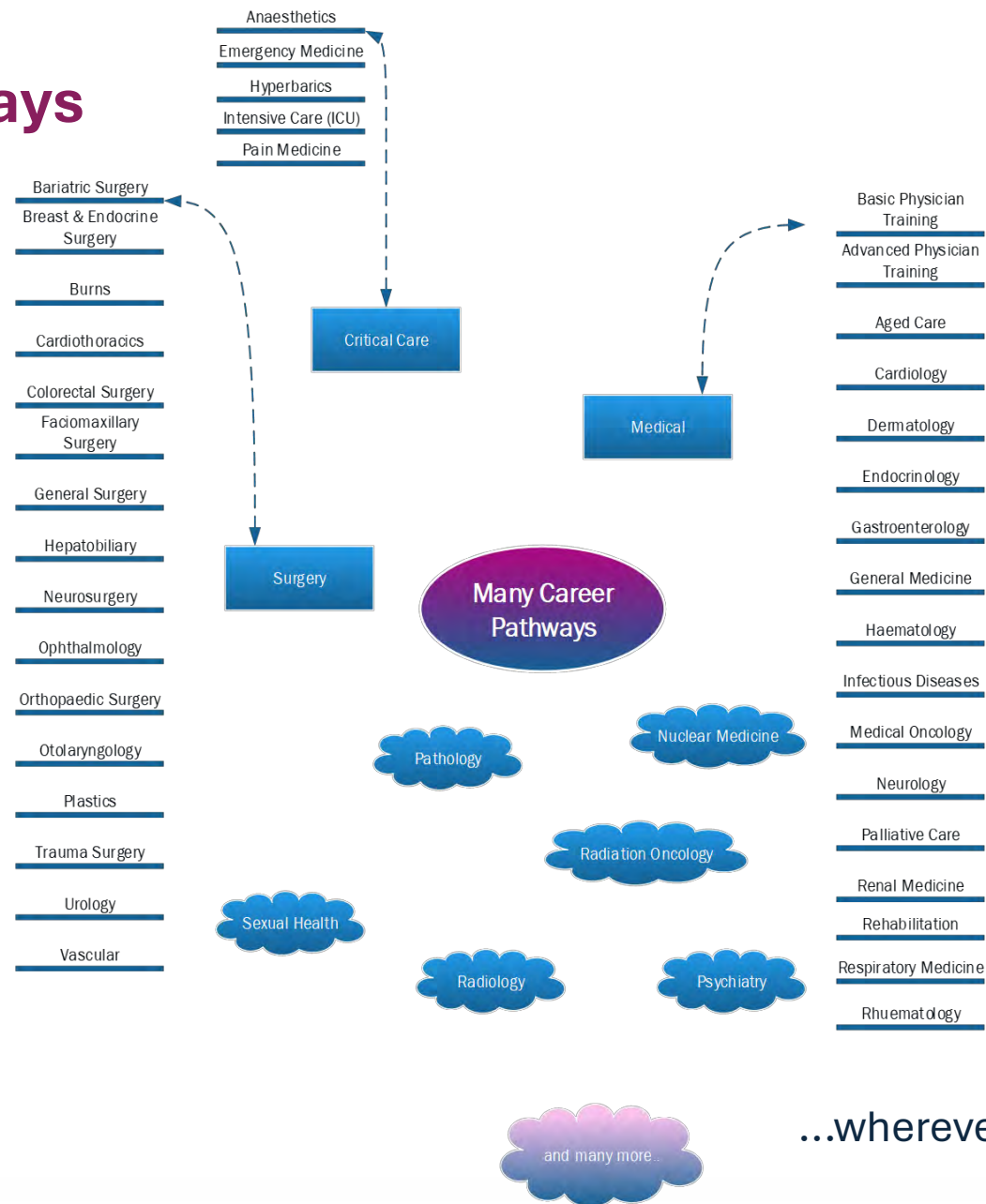


Beyond Internship at Alfred Health

- Career counselling
- Career pathways and progression
- Research opportunities
- Teaching opportunities

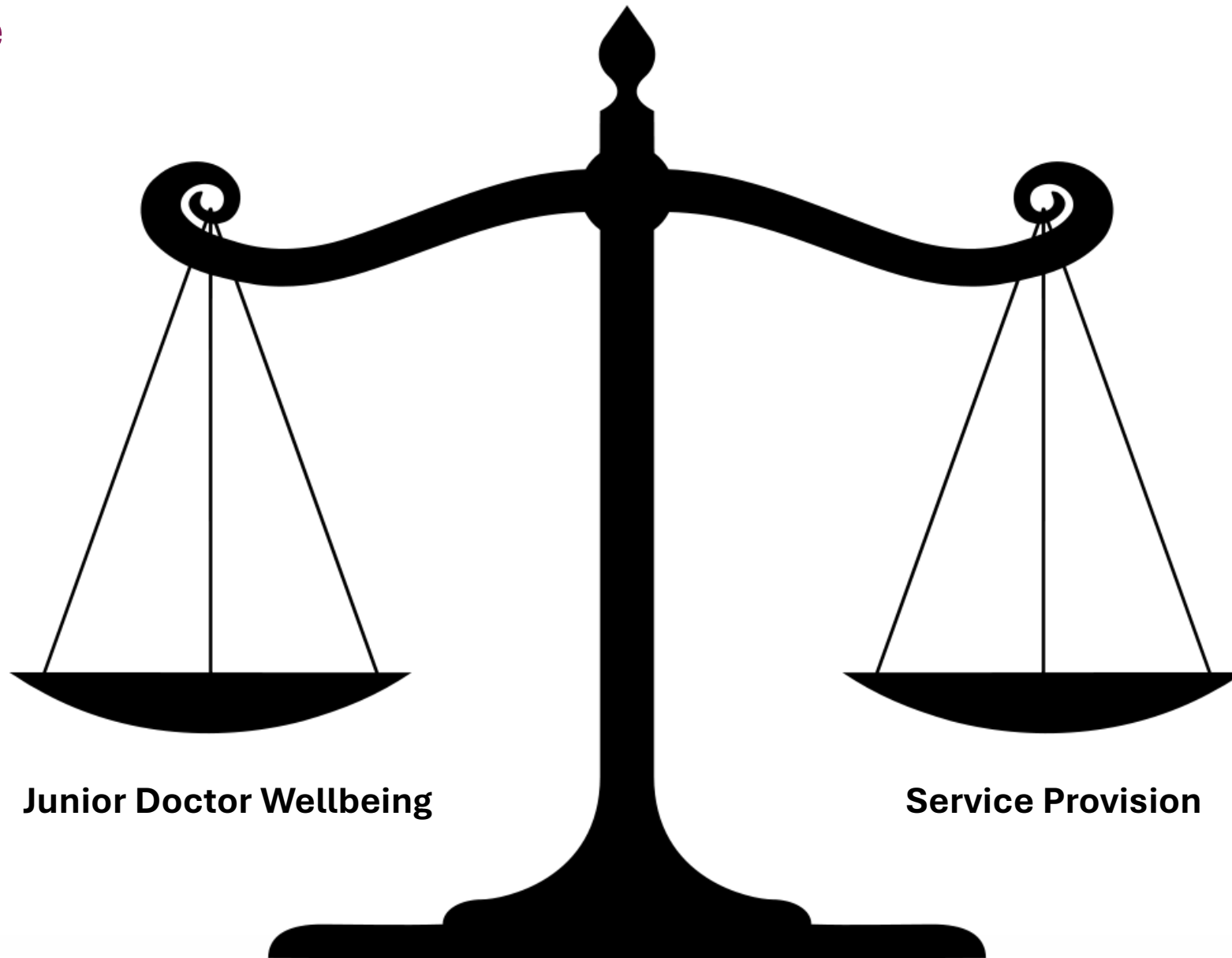


Career Pathways



...wherever & whatever you end up doing,
we will be supportive

The Juggle



Junior Doctor Wellbeing

Service Provision

What you can expect

A caring environment

- We take pride in our trainees & their achievements.
- We monitor rotations, workload & supports.

Wellbeing resources

- Internal & external support networks.

Internal supports

- Mentor program
- Consultant Mentors
- Supervisors in each unit
- SIT, DCT, DPME

The reality of the job

Assault

Death

Hard to hear stories

High stress

Professionalism

Mental health

Hard work

Abuse

Poor health literacy

Violence and aggression

Substance misuse

Insecure housing

The reality of the job

Connection

Purpose

Make a difference

High reward

Professionalism

Satisfaction

Support

Training

Joy

Teamwork

Debrief

Stimulation

Doctor Wellbeing Resource 2025 v2

AlfredHealth

For the most current information go to Alfred Health Connect: <https://alfredhealthconnect.sharepoint.com/sites/AlfredHealth-Wellness>

Lifeline

13 11 14

<https://www.lifeline.org.au/>

Provides Australians experiencing a personal crisis with free access to 24-hour crisis support and suicide prevention services.



Australian Medical Association (AMA) Peer Support Service

1300 853 338

<https://amavic.com.au/article/need-to-talk-but-not-sure-who-to-approach-contact-amav-s-peer-support-service>

Support services offered:

Free, anonymous, and confidential support from a colleague regarding:

- Stress and stressful incidents
- Personal issues
- Career plans
- Other wellbeing concerns.



Alfred Health's Peer Support Program

[Click here to find a medical peer contact](#)

Trained Alfred Health staff can provide confidential one-on-one assistance, virtually or in-person. Peer supporters focus on brief practical interventions, support, and links to professional help, if needed.



Assure

1800 808 374

<https://assureprograms.com.au/>

Alfred Health provides access to our Employee Assistance Program (EAP), provided by Assure. Assure is a confidential counselling, coaching and wellbeing support service, led by specialists to assist you and your family at no cost.



Victorian Doctors Health Program (VDHP)

1300 330 543

www.vdhp.org.au

A free, confidential & anonymous service assisting doctors and their families with:

- Stress and anxiety
- Substance use problems
- Mental or physical health concerns
- Any other health issues



DRS4DRS

1300 374 377

<https://www.drs4drs.com.au/>

A confidential service, run by doctors, to support doctors' wellbeing. Online resources, counselling, referral services & help finding a GP.



Alfred Health Support

Medical Education

A/Prof Laila Rotstein
Director Clinical Training

Dr Melissa FitzGerald
Director Prevocational Medical Education

Dr Laura Scott
Supervisor Intern Training

Medical Education Unit
medicaleducation@alfred.org.au

Medical Workforce

Reception: 9076 2480
After Hours (5pm – 8am): 0419 770 036
alfredmwu@alfred.org.au

Medical Services

Dr Tony Kambourakis
Chief Medical Officer
Contact via switch
medicalservesEA@alfred.org.au

Dr Pip Hawkings & Dr Anna Korin
Directors Medical Services
Contact via switch
medicalservesEA@alfred.org.au

Human Resources

Louise Vecchi
Chief People Officer (Interim)
Contact via switch
hr@alfred.org.au

Organisational Development

Thérèse Christofas
Senior OD Consultant - Wellbeing Lead
Contact via Switch

Finding Your Own GP

GP Liaison Officer
9076 2620
gp.liaison@alfred.org.au

Aboriginal Hospital Liaison Officers

[AHL O SharePoint Page](#)
0419 592 207
aboriginalhealth@alfred.org.au
(Mon-Fri 8:30am – 5:00pm)

Senior Medical Staff Association

Dr Annabel Orr
Contact via switch

Alfred Resident Doctors' Society

ards.alfred@gmail.com

Your Program Director, Unit Head and Supervisor

Various. Contact via switch.

Beyond Blue - Heads Up

1300 224 636

www.beyondblue.org.au/getsupport
www.headsup.org.au/

Free, confidential, and anonymous enquires. Offers information regarding support services to help with mental health at work.



Breastfeeding & Breast Milk Expression Facilities

24-hour access. Staff should check with the local NUM/NIC or COM/Nursing Supervisor (after-hours).

[Click here for more information](#)

Alfred: 6 West & Level 3, 541 St. Kilda Rd

Sandringham: F3 Ward

Caulfield: ABI Unit and Outside Ward AC3

MSHC: Rooms available, contact [Claire Randall](#)



Mrs Amy Murray Brooks
Operations Lead,
Medical Workforce

2026 Intern Year, Rotations and Pathways

Our Rosters and Operations Team

Director Medical Workforce

Jon Oldham

Operations Manager

Zoe Hume

Rosters and Operations Specialists:

- Amy Murray Brooks
- Dwight Cleur
- Ethan Delaney
- Natalie Fraraccio

Responsibilities:

- General liaison and contact
- Allocations
- Leave
- Overtime
- Payroll
- Rostering



Positions

- 74 positions* available in 2026
- The Intern year is from 12/01/2026 – 10/01/2027 – with intern contracts commencing from 05/01/2026 for orientation week
- Throughout your internship you will complete 5 rotations

Term	Start	Finish	No. of Weeks
Term 1	12/01/2026	22/03/2026	10
Term 2	23/03/2026	31/05/2026	10
Term 3	01/06/2026	09/08/2026	10
Term 4	10/08/2026	18/10/2026	10
Term 5	19/10/2026	10/01/2027	12

Rotations

- 30 specialty rotations available*
- Rotations at The Alfred, Caulfield, Sandringham, Bass Coast and Bethlehem Hospitals
- 88% of rotations based at The Alfred

Bethlehem - Palliative Care	General Surgery BES	Psychiatry - Ground Floor
Burns	General Surgery CRS	Psychiatry - Level 1
Cardiology	General Surgery HPB	Psychiatry - St Kilda Rd Clinic
Caulfield Aged Care	General Surgery OGB	Radiology
Dermatology	General Surgery Sandringham	Respiratory
Emergency – Alfred/Bass Coast	Orthopaedics	Respiratory Transplant
Gastroenterology	Psychiatry - ABI	Stroke/Neurology
General Medicine - Alfred	Psychiatry - Aged Care	Trauma
General Medicine - Sandringham	Psychiatry - Consultant Liaison	Urology
General Surgery AGSU	Psychiatry - Emergency (CAT)	Vascular

Allocation of rotations

- 74 line rotation matrix constructed that incorporate the minimum internship requirements
- Terms are then grouped together based on career interests (including mixed lines)
- Interns rank each line from 1 – 74
- Allocations ranked on a 'best fits all' methodology
- Swaps are considered but require PMCV sign off prior to approval

	Rotation 1	Rotation 2	Rotation 3	Rotation 4	Rotation 5
38	GENERAL SURGERY - OGB	GMU ALFRED (AL 9&10) (4)	ED (AL wks 7&8)	ORTHOPAEDICS (4)	PSYCHIATRY ST KILDA RD CLINIC
39	GENERAL SURGERY - AGSU (1)	GMU ALFRED (5)	ED (AL wks 7&8)	ORTHOPAEDICS (5)	PSYCHIATRY ABI
40	GENERAL SURGERY - AGSU (2)	GMU ALFRED (6)	ED (AL wks 9&10)	UROLOGY	PSYCHIATRY AGED CARE
41	GENERAL SURGERY - AGSU (3)	GMU ALFRED (7)	ED (AL wks 9&10)	VASCULAR	PSYCHIATRY CL
42	GENERAL SURGERY - SANDRINGHAM (1)	GMU ALFRED (8)	ED (AL wks 9&10)	PSYCHIATRY ST KILDA RD CLINIC	GENERAL SURGERY - HPB
43	GENERAL SURGERY - SANDRINGHAM (2)	GMU ALFRED (9)	BCH ED 1	ORTHOPAEDICS (3)	DERMATOLOGY
44	DERMATOLOGY	GMU SANDRINGHAM (1)	BCH ED 2	PSYCHIATRY AGED CARE	ORTHOPAEDICS (3)
45	ORTHOPAEDICS (1)	GMU SANDRINGHAM (2)	BCH ED 3 / ALFRED-SANDY ED ??	PSYCHIATRY CL	CARDIOLOGY (2)
46	ORTHOPAEDICS (2)	GMU SANDRINGHAM (3)	PSYCHIATRY ST KILDA RD CLINIC	ED (AL wks 3&4)	GENERAL SURGERY - CRS (1)
47	ORTHOPAEDICS (3)	GMU SANDRINGHAM (4)	PSYCHIATRY ABI	ED (AL wks 3&4)	GENERAL SURGERY - CRS (2)
48	GENERAL SURGERY - SANDRINGHAM (3)	STROKE/NEUROLOGY	PSYCHIATRY AGED CARE	ED (AL wks 3&4)	GENERAL SURGERY - BES
49	ORTHOPAEDICS (4)	STROKE	PSYCHIATRY CL	ED (AL wks 5&6)	RADIOLOGY

Progression of Training – PGY2+

BPT1 (PGY2)	PGY2 General	
<ul style="list-style-type: none"> • ABI/Rehab • Aged Care – Caulfield • Emergency – Sandringham • Endocrinology • Haematology • Infectious Diseases • Nights/Relieving • Neurology • Renal • Respiratory 	<ul style="list-style-type: none"> • ABI/Rehab • Anaesthetics • GMU – Bass Coast • Burns • Cardiology • Cardiothoracics • Emergency – Alfred • Emergency – Sandringham • ENT • Faciomax • General Surgery – AGSU • Geriatric Orthopaedics • Geriatric Trauma • ICU 	<ul style="list-style-type: none"> • Neurosurgery • Nights/Relieving • Ophthalmology • Orthopaedics – Alfred • Orthopaedics – Sandringham • Peri-Operative Anaesthetics • Plastics • Psychiatry • Radiation Oncology • Trauma • Urology • Vascular

*Rotations and positions available are subject to change

Progression of Training – PGY3+

PGY3 Critical Care <i>(26 positions*)</i>	BPT2 + BPT3 <i>(70 BPT positions*)</i>	PGY3 Surgical + Unaccredited <i>(37 PGY3* + 14 unaccredited positions*)</i>
<ul style="list-style-type: none"> • Anaesthetics • Emergency Department • General Medicine • Intensive Care Unit • Trauma Surgery 	<ul style="list-style-type: none"> • Aged Care • Cardiology • Gastroenterology • General Medicine Unit • Haematology • Infectious Diseases • Intensive Care Unit • Medical Oncology • Neurology • Nights (Caulfield) • Palliative Care • Renal • Respiratory • Rheumatology <p>External rural rotations in General Medicine</p>	<ul style="list-style-type: none"> • Cardiothoracic Surgery • Emergency Department • ENT • General Surgery: BES, CRS, HPB, OGB & AGSU • Intensive Care Unit • Neurosurgery • Orthopaedic Surgery • Plastic Surgery • Urology Surgery • Vascular Surgery • Trauma Service <p>External rural rotations in General Surgery & Orthopaedic Surgery</p>

*Rotations and positions available are subject to change

Rosters

- No rostered night shifts
- Published four weeks prior to the commencement of each term on Microsoft Teams
- Email notification from MWU Roster and Operations Specialist with administrative orientation
- We accept roster requests

HR

HMO 2024

Posts

Files ▾

Notes

+

+ New ▾

↑ Upload ▾

📄 Edit in grid view

🔗 Share

🔗 Copy link

🔄 Sync

📁 Add shortcut to OneDrive

↓ Download

🌐 Open in SharePoint

HMO 2024 > Rotation 2 > Interns

📄	Name ▾	Modified ▾	Modified By ▾	+ Add column
📄	GMU Intern Rotation 2.xlsx	About an hour ago	Fraraccio, Natalie	
📄	Psychiatry Intern - Rotation 2.xlsx	6 days ago	Moses, Samantha	
📄	Radiology Intern Rotation 1.xlsx	February 23	Murray Brooks, Amy	

Annual Leave

- Interns are allocated 5 weeks of annual leave per annum
 - 2 weeks within Alfred Emergency Department & Alfred General Medicine Terms (requested via allocations process)
 - 3 weeks either between the end of Intern year and commencement of HMO year or throughout the year



Dr Benjamin Townley
Current Alfred Health PGY2

My Intern Year at Alfred Health

Internship Experience

- Make the most of the support
- Reflect on the variety in experience
- Develop critical thinking skills



Med student



Intern

Internship Experience

- Make the most of the support
- Reflect on the variety in experience
- Develop critical thinking skills



Med student



Intern

Internship Experience

- **Make the most of the support**
- **Reflect on the variety in experience**
- **Develop critical thinking skills**



Internship Experience

- Make the most of the support
- **Reflect on the variety in experience**
- Develop critical thinking skills



Internship Experience

- Make the most of the support
- Reflect on the variety in experience
- **Develop critical thinking skills**



Why Alfred?

- Make the most of the support
- Reflect on the variety in experience
- Develop critical thinking skills



theAlfred

Why Alfred?

- **Well supported**
- Reflect on the variety in experience
- Develop critical thinking skills



the**Alfred**

Why Alfred?

- Well supported
- Investment in you
- Develop critical thinking skills



the**Alfred**

Why Alfred?

- Well supported
- Investment in you
- Expectation of high level performance



theAlfred

A/Prof Anne Powell

Director of Physician

Education, Alfred Health

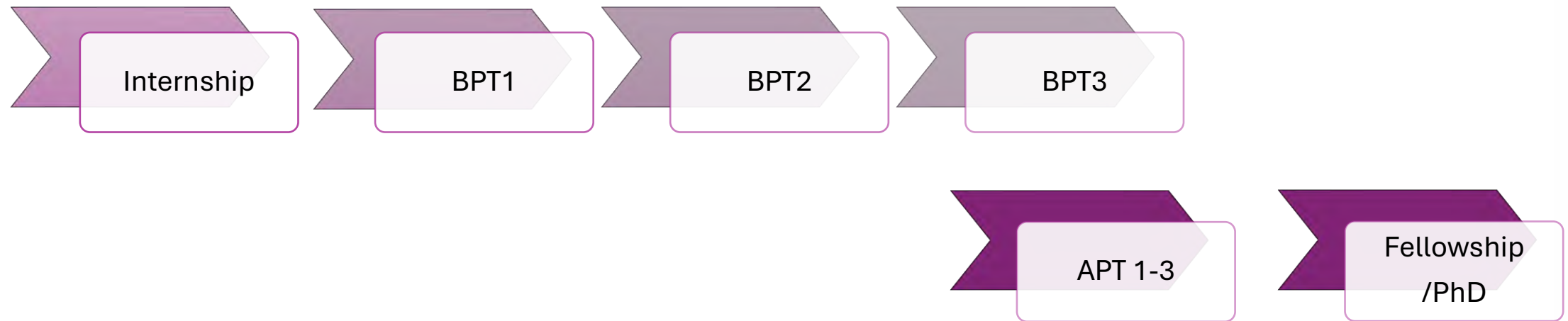
Rheumatologist &

General Physician

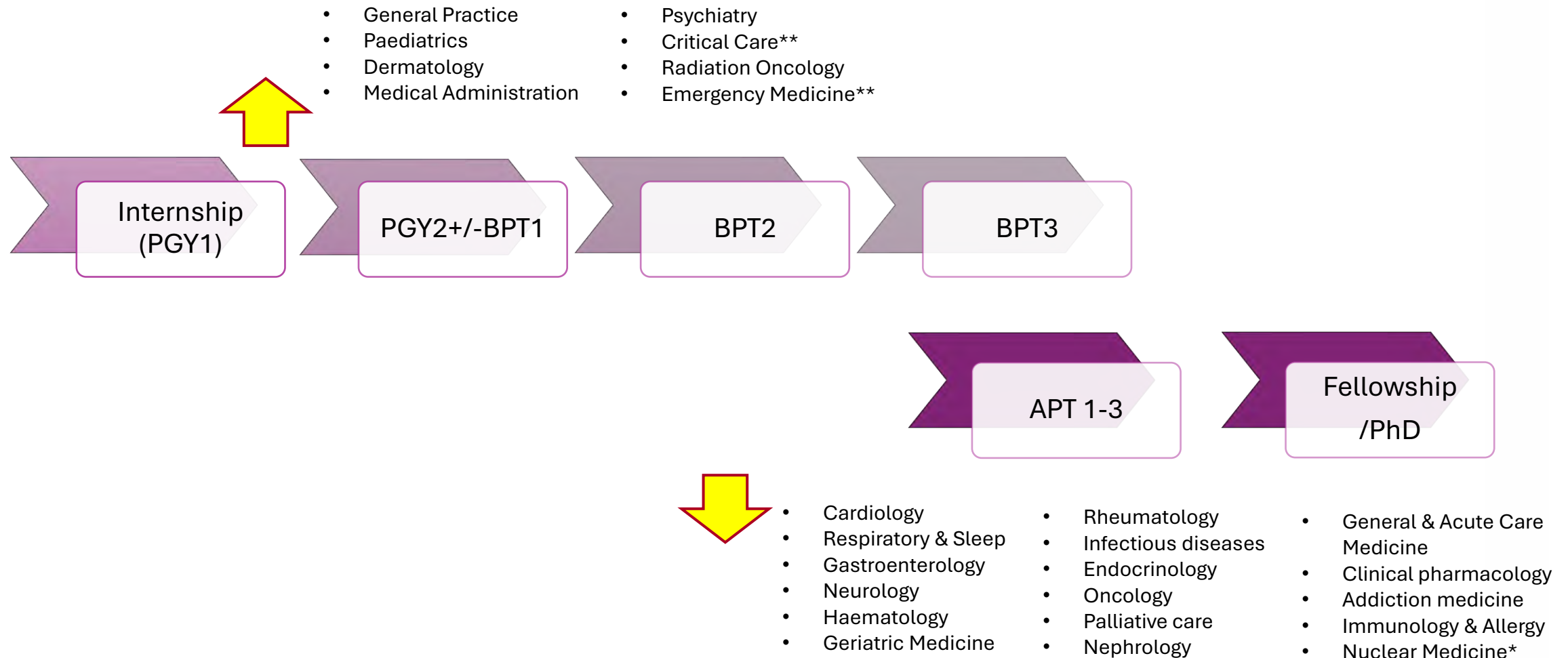
Medical Pathway

Physician Training at Alfred Health

Overview



Physician Training at Alfred Health



Physician Training at Alfred Health

Training opportunities

General aspects

- Educational supervisor/mentor (linked to area of interest)
- Advanced life support training
- Research opportunities within area of interest
- Significant supports with 4 Directors of Physician Education and 1 full time administrator and one senior education registrar

BPT1

- Weekly education sessions
 - Medical emergencies
 - Clinical skills sessions
 - Overview of subspecialty medicine
- Research training & publication/CV building opportunities

Physician Training at Alfred Health

Training opportunities

BPT2

- Wednesday afternoon lecture series to prepare for written examination
- Written examination preparation course and online modules
- 5 Trial examination papers and feedback sessions and a large pool of online question banks
- 2 weeks conference leave to attend written examination course

BPT3

- Wednesday afternoon **dedicated** paid training time (only health service to offer)
- Program of short and long case preparation tutorials
- High pass rate in examination results (26/27 **95%** written exam 2024; 28/32 **88%** written exam 2025. 2/2 **100%** October written exam; clinicals 2024 34/36 **94%** with **100%** 2nd time sitters supported and passing).
- Consistently high rates of success in obtaining desired APT training program in first year

The screenshot displays the Alfred Health Physician Education website. The top navigation bar includes the Alfred Health logo, 'Physician Education', and links for 'HOME' and 'CONTACT US'. A user profile for 'Anne Powell' is visible in the top right. The main content area features a grid of 12 topic tiles, each with a representative image and a label: 'The Long Case' (road), 'The Short Case' (clock), 'Cardiology' (stethoscope), 'Endocrinology & Infectious Diseases' (sugar skull), 'Gastroenterology, Haematology & Renal' (apple on books), 'Neurology' (tree), 'Respiratory' (flowers), 'Rheumatology' (piano), and 'Staying well and Future planning' (bicycle). A sidebar on the left contains a menu with options like 'Approach to the RACP Examination 2025', 'Participants', 'Badges', 'Competencies', 'Grades', and a list of medical specialties. Below the grid, a section titled 'B-P Consortium' lists various resources and courses, including '2021 MCQR', '2021 MCQ', '2020 Clin', and a detailed list of courses under 'WE22-23' such as 'General', 'Written Exam Resources', 'Trial Exam feedback', 'Cardiology', 'Respiratory', 'Neurology & Neuroanatomy', 'Renal', 'Clinical Pharmacology', 'Genetics', 'Immunology', 'Statistics', 'Haematology', 'Rheumatology', 'Medical Oncology', 'Gastroenterology', 'Infectious Diseases', 'Geriatrics', and 'Dermatology'. The bottom of the page features the Alfred Health logo.

Dr Eleanor Junckerstorff

ED Deputy Director,

Workforce and Education

Emergency Physician

Critical Care Pathway

Critical Care Pathways

What is Critical Care at Alfred Health?

- Emergency Medicine
- Intensive Care
- Anaesthesiology
- Trauma



Prevocational Years

- Experience and Exposure
- Ongoing Learning
- Develop Leadership and
- Followership Skills
- Build Relationships
- Gather References
- Expand your Interests



Alfred Health Critical Care Departments

Amazing Opportunities to see and care for patients you will not see anywhere else
(with world experts in many fields leading, teaching and supporting you)

Alfred Emergency Department - unique and complex adult patient cohort

Sandringham Emergency Department - paediatrics and O&G experience. Same consultants working across both with high research output and extensive global health engagement.

Intensive Care Unit - State of the art ICU, world leaders in many fields, Victorian ECMO service.

Huge Anaesthetics Department supporting our ED, ICU, Trauma and Surgical Specialty Units.

Trauma Unit - multidisciplinary department at the cutting edge of trauma care.

PGY3 Critical Care Rotations and Beyond

- Anaesthetics
- ICU
- Emergency Medicine
- Trauma
- General Medicine
- Relieving



Critical Care Pathways at Alfred Health

What we are proud of:

- We deliver exceptional patient care
- We are a team
- We have strong relationships between critical care disciplines
- We remember what it was like to be a junior doctor
- We are invested in your professional development and wellbeing
- Supported by our leaders and [AMAZING MWU](#)



Dr Laura Blair-West

Principal Psychiatry Registrar

Psychiatry Pathway



My Journey

Prevocational
training
opportunities in
psychiatry

Psychiatry
training at Alfred
Health / AMAH

My Journey

1. Medical School

- Monash undergraduate
- BMedSc MAPrc

2. Internship

- IPU rotation

3. Psychiatry HMO

- 6 months IPU
- 6 months community

4. Psychiatry Training

- Basic training (IPU, community, CL, child/adolescent)
- 'Elective' rotations (MSTS, forensic psychiatry)
- Advanced training (CL, including perinatal rotation)
- Family planning (full-time, parental leave, part-time)
- Principal registrar (leadership, mentoring, advocacy)

Why psychiatry?

- Diverse, dynamic, fascinating – never dull
- Patient-centred, recovery-oriented care – meaningful, rewarding
- Collaborative – MDT
- Growing need / funding – plenty of work



Prevocational training opportunities at Alfred Health

1. PGY1

- IPU
- Community
- CL
- CATT
- Aged

2. PGY2

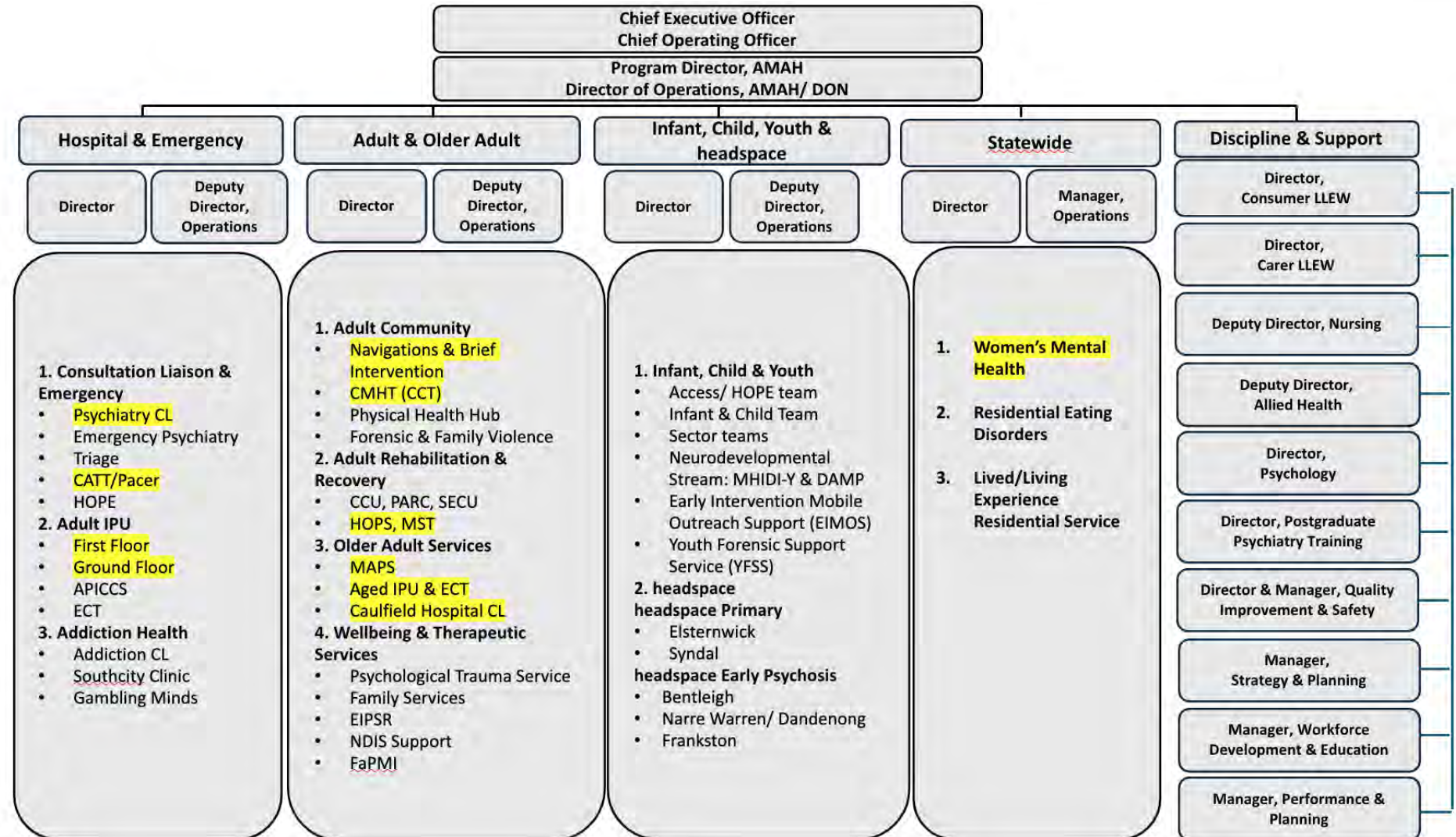
- IPU
- Aged
- Women's MH

3. Psychiatry HMO

- IPU
- Community
- Women's MH

Foundational skills

- MSE
- Risk assessment
- Common presentations
- Delirium



Psychiatry training at Alfred Health / AMAH

Why Alfred Health?

- Big team (~66 JMS)
- Diverse rotations
- Established AT programs
- Amazing teaching / exams prep
- Leadership opportunities
- Mentorship, peer support

Stage	Year	What happens
1	1	Adult IPU Adult Community
2	2,3	CL Child/adolescent 2 others +/- Summative assessments
3	4,5 6+	Choose your own adventure Default = general adult psychiatry, unless you choose AT Summative assessments

Mr Andrew Packiyanathan
Supervisor of Prevocational
Surgical Training
General Surgeon

Surgical Pathway

Newsweek 2025



Australia	
Rank	Hospital
1	Royal Prince Alfred Hospital
2	The Alfred
3	Royal Melbourne Hospital - Parkville
4	St Vincent's Hospital - Fitzroy
5	Royal North Shore Hospital

- Highest ranked in Victoria
- Melbourne has better coffee than Sydney (and culture and sports and cuisine)
- The Alfred has a small hospital feel and people get to know you by name

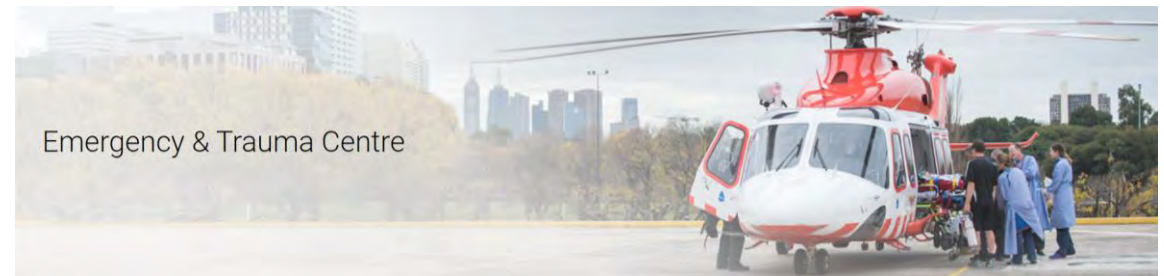
Embrace the Lifestyle

- **Junior Drs are well supported**
- Being thrown in the deep end may sound heroic but it's not fun
- ***No nights*** as an intern
- ***No rural or regional rotations***, Sandringham is as far as you'll go and that's near the beach
- Bayside Health (working title) in progress
- Inner city lifestyle
- Cafes / restaurants / pubs
- Sporting events
- Easy access to the city on Friday nights



On a Serious Note

- “CAN DO” attitude
- **Full complement of surgical specialties** that offers great exposure for junior staff
- ***“No one dies at Alfred”; thanks to our ECMO service!***
- Trauma
- Burns
- Hyperbaric
- Cardiac Transplant
- Bariatric and Metabolic Surgery
- ICU (largest in the state)



Our Vision and Our Culture

- *History of excellence in surgical education and training*
- We are committed to delivering the ***best prevocational surgical training program in the state***
- **Our trainees consistently enter RACS training programs**
 - 4 out of 5 trainees in general surgery 2024.
 - 3 applicants this year.

1. Supervision

- Appropriate supervisor
- Listening to feedback
- Orientation – unit checklist (pilot)

3. Professional Development

- Research
- CV building
- Career counselling

2. Education

- Tuesday attendance 12:00-1:00pm
- Unit specific tutorials
- Theatre time
- Simulation and skills training

4. Wellbeing

- Mentor Program – registrars / consultant

Our Vision and Our Culture

- Our consultants have been juniors at the Alfred
- We aim to retain our residents (when selected into RACS training programs)
- We strive to look after and retain our doctors!



Our Vision and Our Culture



Come to The Alfred for surgical training!



Ms Amy Tran
Recruitment Specialist,
Medical Workforce

Intern Recruitment Process

Our Medical Workforce Recruitment Team

Director of Medical Workforce

Jonathan Oldham

Recruitment Lead

Samantha Thomas

Recruitment Administrator, Senior Medical Staff (SMS)

Vanessa Artale

Manager Recruitment and Workforce Services

Fatima El Souki

Recruitment Specialist, Junior Medical Staff (JMS)

Amy Tran

Recruitment Specialist, Junior Medical Staff (JMS)

Natasha Filippone

Recruitment Administrator, Junior Medical Staff (JMS)

Emily Lam

The Medical Workforce Recruitment Team manages all the administrative aspects of medical staff appointments including recruitment and on-boarding, employment contract, credentialing and coordination of visa sponsorship and AHPRA application of international medical staff.

Key Changes

- The Postgraduate Medical Council of Victoria (PMCV) Intern Match algorithm is now an optimised ballot.
- Restructuring of Victorian Intern Allocation (VIA) Groups.
- Candidates will be required to preference all 27 health services/intern training programs.
- Please ensure you read the PMCV's Intern Match Information/Guide for further details.

Key Changes

Eligibility Groups	Eligibility Criteria
VIA Group 1	<ul style="list-style-type: none">• Graduates from an Australian university identifying as Aboriginal or Torres Straight Islander.• Australian citizen or permanent resident and New Zealand citizens graduating from a Victorian medical school.
VIA Group 2	<ul style="list-style-type: none">• Australian temporary residents graduating from a Victorian university.• Australian citizens or permanent residents and New Zealand citizens graduating from an interstate university who completed their year 12 schooling in Victoria.
VIA Group 3	<ul style="list-style-type: none">• Australian citizens or permanent residents and New Zealand citizens graduating from an interstate or New Zealand university.• Australian temporary residents graduating from an interstate university.• New Zealand temporary resident graduating from a New Zealand university.
VIA Group 4	<ul style="list-style-type: none">• Graduates from an overseas campus of an Australian/New Zealand university accredited by the Australian Medical Council (i.e. Monash University, Malaysia or Ochsner).

PMCV Intern Match Key Dates

6 May - 5 Jun 2025	Application period
6 - 8 Jun 2025	PMCV video interviews – VRPA and VIA Group 4 candidates only
16 - 31 Jul 2025	First offer period
14 Aug – 4 Sep 2025	Second offer period
18 Sep – 16 Oct 2025	Third (final) offer period
12 Jan 2026	2026 Intern start date

Pre-employment and Onboarding Processes

- We'll be in direct contact with next steps.
- Completing a national police check and onboarding ASAP.
- Two-year contracts offered.
- Five days of paid intern orientation will commence from 05 Jan 2026.



Frequently Asked Questions

How do I guarantee an internship position at Alfred Health?

The PMCV match algorithm is an optimised ballot so, there are no guarantees. You can increase your chances by ranking us '1' as your most preferred health service in your PMCV application if eligible.

Are mid-year internship positions available?

All our positions are allocated for a January commencement date.

How many positions are available to VIA Group 4 candidates?

The numbers are dependent on the VIA Group 1-3 match allocations. PMCV will conduct further offer periods as per the key dates which can be found on the PMCV website.

Are part-time positions available?

Yes, there are flexible working arrangements and PMCV have guidelines around this.

Please contact our Medical Recruitment team
at medicalrecruitment@alfred.org.au for any other queries

Join us at Alfred Health

Voted #1 Hospital in Victoria, #2 Hospital nation-wide and top 100 Hospital world-wide



*Thank you for your time and
we wish you all the best!*