

Paediatric Urine Collection

Patient Instructions

Collecting a clean specimen of urine can sometimes be difficult. If a child is not toilet trained a "Baby Urine Collector" is used

Equipment provided for this test

- Baby Urine Collector (urine bag)
- One 50ml specimen container

Prior to commencing this test

Ensure the pubic & genital areas have been thoroughly washed, clean, dry and free from powder.

Collection instructions

1. Remove the protective strip

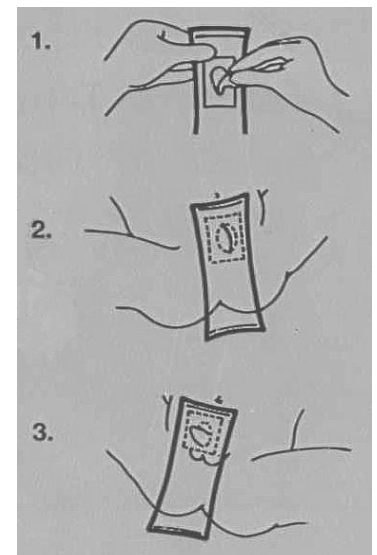
Wash your hands and remove the protective strip paper on the urine bag, exposing the adhesive. DO NOT put your fingers inside the bag as this will contaminate the sample.

2. Female Collection

Position the wider part of the opening of the bag so that it covers the upper part of the genitalia, ensuring that the small end of the opening is applied firmly to the skin in the area between the vagina & rectum. Apply gentle pressure to the adhesive area to seal. The bag needs to be positioned lower down on females to ensure that the urine flows into the bag.

3. Male Collection

Place the wider section of the opening under the scrotum, insert the penis into the bag and apply pressure to the adhesive area to seal.



- To encourage the baby to urinate, give the baby a drink. Attach the bag before feeding your baby & make sure when putting on the nappy that it is not too tight.
- Check every 15 minutes to see if your baby has passed urine. Do not leave the bag on for more than one hour. Take the bag off if the skin develops irritation and/or symptoms of an allergy.
- When urine appears in the bag, remove the bag gently, fold the two adhesive surfaces together & seal the bag.
- Hold the bag over the specimen container & using clean scissors, cut off a corner, let the urine run into the jar. Place the lid firmly on the container & dispose of the collection bag.
- Refrigerate the sample until you can deliver it the pathology centre. Please deliver the sample as soon as possible. (within 2 – 3 hours from collection).

PLEASE NOTE

Specimens will NOT be accepted if not collected in appropriate (pathology provided) container/kit.
If there is a problem during the collection, replacement container/kit can be provided.
Contact numbers and service hours for collection centres are on the back of pathology request slip.



Alfred Pathology Services

55 Commercial Road
Melbourne, Vic 3004
PO Box 315, Prahran
Vic, 3181, Australia

Tel: 9076 3576
Fax: 9076 3781

www.alfredhealth.org.au