

Please inform a staff member if you:

- **Are pregnant or are a nursing mother**
- Are claustrophobic
- Require the results sent by a specific time or method to your doctor

Additional Information

Remember to remain still while you are being imaged, as movement may blur the images.

The amount of radiation you will receive during the test is similar to many types of x-rays and CT scans.

Adverse side effects of the radioactive tracer are rare, but if you do experience any discomfort or feel differently after the injection or during the test, please inform the technologist or doctor.

The radioactive tracer you are given remains in your body for a short time and is cleared from the body through normal bodily functions.

There will be no restrictions to your daily routine after the test.

Please Recycle



If you no longer require this pamphlet please return it to the pamphlet holder or place it in a recycle bin. Thank-you.

Please contact us if you are unable to attend the test or if you have any queries

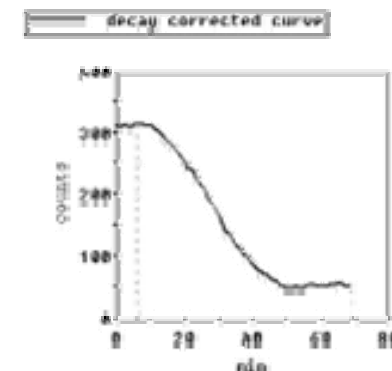
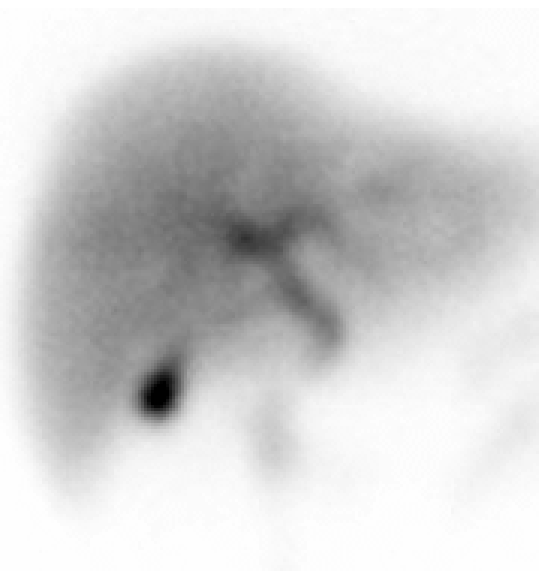
The Alfred Hospital
Nuclear Medicine Department

First Floor East Block
55 Commercial Road Melbourne VIC 3004

Phone: 03 9076 2432
Fax: 03 9076 2599
Web: www.alfred.org.au/nuclearmedicine

Version ANM0377v1 Issued 11May 2010 by HB

 Nuclear
TheAlfred Medicine



HIDA SCAN

(Hepatobiliary)

Patient Information

HEPATOBILIARY SCAN

A Nuclear Medicine Hepatobiliary (HIDA) Scan is a procedure used to evaluate the biliary tract and gall bladder function.

A radioactive tracer which emits gamma radiation is administered and is taken up in the liver and excreted into the biliary system.

The passage of the radioactive tracer through the biliary system is imaged using a Gamma Camera.

Patient Preparation

- **Fast from midnight the night before the test**
- **Refrain from smoking from midnight the night before the test**

Test Duration

- **30 minutes for a standard HIDA Scan**
- **2 ½ hours for a CCK HIDA Scan**

What does a Hepatobiliary Scan involve?

PART 1

You will be positioned under a Gamma Camera and given an injection of a small amount of a radioactive tracer into a vein in your arm.

Imaging of your liver and gallbladder will begin immediately and last at least 30 minutes. Additional shorter images may be required a few hours after the initial scan.

or

If your Doctor has asked for a quantitative assessment of gall bladder function, you will be given an injection of the radioactive tracer and asked to wait for 1 hour. During this time the radioactive tracer will concentrate in your gallbladder.

An intravenous cannula will then be inserted into a vein in your arm and you will be positioned under a Gamma Camera.

Imaging will commence along with a slow infusion of CCK through the intravenous cannula. CCK mimics a natural hormone that causes the gall bladder to contract, allowing us to measure the gallbladder ejection fraction.

This part of the test will last about 90 minutes.

PART 2

A Nuclear Medicine Specialist will interpret the images and send a report to your referring doctor that same day.

Cholecystokinin (CCK)

CCK may cause some minor nausea and pain. Please tell the technologist or doctor if this occurs.

What does a Hepatobiliary Scan investigate?

Some of the more common indications for having this test are:

- Cholecystitis (inflammation of the gallbladder)
- Biliary tract obstruction
- Gallbladder ejection fraction
- Bile leaks
- Biliary Atresia
- Investigation of abdominal/gallbladder pain