

Please inform a staff member if you:

- **Are pregnant or a nursing mother**
- Are claustrophobic
- Are allergic to milk or porridge
- Require the results sent by a specific time or method to your doctor

Additional Information

Remember to remain still while you are being imaged, as movement may blur the images.

The amount of radiation you will receive during the test is similar to many types of x-rays and CT scans.

There are no known side effects from this examination.

The radioactive tracer you are given remains in your body for a short time and is cleared through normal bodily functions.

There will be no restrictions to your daily routine following the test.

Please contact us if you are unable to attend the test or if you have any queries

The Alfred Hospital
Nuclear Medicine Department

First Floor East Block
55 Commercial Road Melbourne VIC 3004


Phone: 03 9076 2432
Fax: 03 9076 2599
Web: www.alfred.org.au/nuclearmedicine

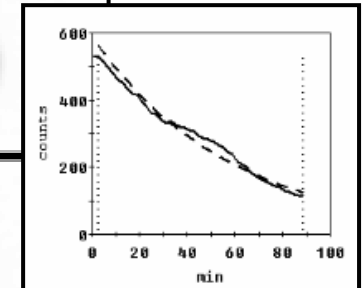
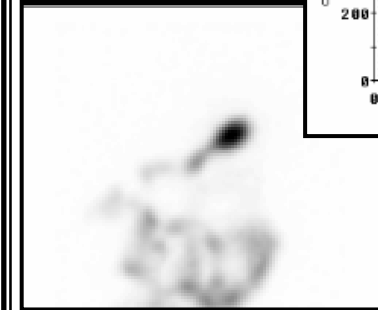
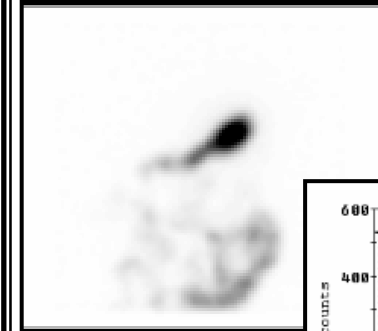
Version ANM0375v1 Issued May 2010 HB

Please Recycle



If you no longer require this pamphlet please return it to the pamphlet holder or place it in a recycle bin. Thank-you.

 Nuclear
The Alfred Medicine



GASTRIC EMPTYING SCAN

Patient Information

GASTRIC EMPTYING SCAN

A Nuclear Medicine Gastric Emptying Scan is a procedure to measure the time taken for either a liquid or a solid meal to pass through the stomach into the small intestine.

A radioactive tracer which emits gamma radiation is ingested and travels through the gastrointestinal system.

The radioactive tracer is incorporated into either a liquid or a solid meal.

The movement of the meal through the stomach is scanned by a Gamma Camera which will image over the stomach for 90 minutes.

Patient Preparation

- **Fast for 8 hours prior to the test**
- **Refrain from smoking for 8 hours prior to the test**

Test Duration

- **2 Hours**

What does a Gastric Emptying Scan involve?

PART 1

Solid meal

You will be asked to eat some porridge that contains a small amount of a radioactive tracer. The radioactive tracer has no taste or smell.

You should try to eat the porridge within 3 minutes.

or

Liquid meal

You will be asked to drink about 500 mL of water containing a small amount of a radioactive tracer. The drink will not have any taste or smell.

PART 2

You will be positioned under the Gamma Camera and the passage of the liquid or solid meal through your stomach will be imaged continuously for 90 minutes.

Additional shorter images may be required a few hours after the initial scan.

PART 3

A Nuclear Medicine Specialist will interpret the scan and send a report to your referring doctor that same day.

What does a Gastric Emptying Scan investigate?

Some of the more common indications for having this test are:

- Unexplained nausea and vomiting
- Symptoms of gastro-oesophageal reflux
- Suspected impaired gastric emptying
- Assessment of effectiveness of medical or surgical treatment