

Please inform a staff member if you:

- **Are pregnant or a nursing mother**
- Are claustrophobic
- Require the results sent by a specific time or method to your doctor

Additional Information

Remember to remain still while your bones are being imaged, as movement may blur the images.

The amount of radiation you receive during the test is similar to many types of x-ray and CT scans.

Adverse side effects to the radioactive tracer are rare. If you do experience any discomfort or feel differently after the injection or during the test, please inform the technologist or doctor.

The radioactive tracer administered remains in your body for a short amount of time and is cleared through normal bodily functions.

Drinking plenty of fluids after the test will aid in the clearance of the radioactive tracer from the body.

There will be no restrictions to your daily routine after the bone scan.

Please Recycle



If you no longer require this pamphlet please return it to the pamphlet holder or place it in a recycle bin. Thank-you.

Please contact us if you are unable to attend the test or if you have any queries

The Alfred Hospital
Nuclear Medicine Department

First Floor East Block
55 Commercial Road Melbourne VIC 3004

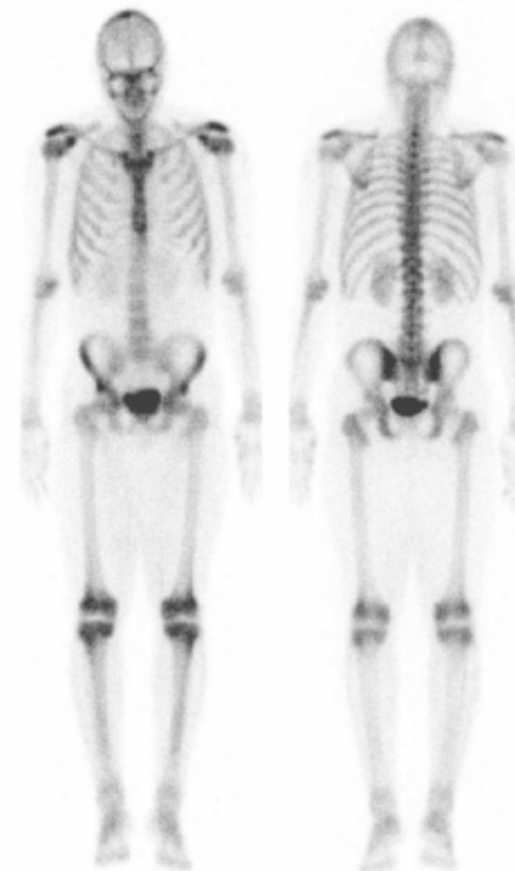
Phone: 03 9076 2432
Fax: 03 9076 2599
Web: www.alfred.org.au/nuclearmedicine

Version ANM 0374V1 Issued: May 2010 by: HB

 Nuclear
TheAlfred Medicine

ANTBODY

POSTBODY



BONE SCAN

Patient Information

BONE SCAN

A Nuclear Medicine Bone Scan is a procedure used to assess the functional state of the bones.

A radioactive tracer which emits gamma radiation and localises to the bones is administered.

This gamma radiation in the bones can be detected by a Gamma Camera and an image is produced.

A bone scan is a sensitive test that can reveal changes in bones which other tests may not be able to detect, such as x-rays and CT scans.

All the bones in the body may be imaged (a whole-body bone scan) or the focus may be on a specific area (a limited bone scan).

Patient Preparation

- **No preparation required for this test**
- **It is helpful to bring along any previous x-rays or Nuclear Medicine scans for comparison with the bone scan.**

Test Duration

- **30 minutes PART 1**
- **45 minutes (approximate) PART 2**

What does a Bone Scan involve?

PART 1

You will be given an injection of the radioactive tracer into a vein in your arm.

Images of the blood supply to a specific problem area may be taken at the time of the injection.

The total time you should allow for the first part of this test is around 30 minutes.

The radioactive tracer will then localise into your bones over the next few hours.

It is not necessary to stay in the Nuclear Medicine Department between Part 1 and 2.

PART 2

2 ½ - 5 hours after the injection, images will then be taken of your bones. You will need to lie quite still whilst the Gamma Camera takes the images.

The total time you should allow for the second part of this test is on average 45 minutes.

On some occasions more detailed images of a particular area of your bones may be required this will lengthen imaging time.

PART 3

A Nuclear Medicine Specialist will interpret the images and send a report to your referring doctor that same day.

Sometimes an x-ray may be required to clarify the bone scan findings. This will be organized by the Nuclear Medicine Specialist.

What does a Bone Scan investigate?

Some of the more common indications for having this test are:

- Fractures
- Bone tumours
- Joint replacement problems
- Spread of cancer
- Bone infection
- Paget's Disease
- Arthritis
- Sports-related injuries