

Colorectal
Surgical Service
Annual Audit

July 1st 2005 to June 30th 2006

Audit Program

- Introduction - KC Farmer
- Audit presentation - K Chapple
 - Staffing
 - Unit activity
 - Morbidity
 - Mortality
- Discussion and questions

Staffing

Consultants

- KC Farmer
Acting head of unit
- I Cunningham
- R Wale
- S Skinner
- P Carne
- S Bell

Fellows, Registrars and Interns

- Fellows
 - Robert Winn
 - Keith Chapple
- Registrar
 - Fotios Sofiadellis
- Interns
 - Dominic Robinson
 - Will Milford
 - Krish Chadhuri
 - Annika Smith
 - Elaine Liew

Support Staff

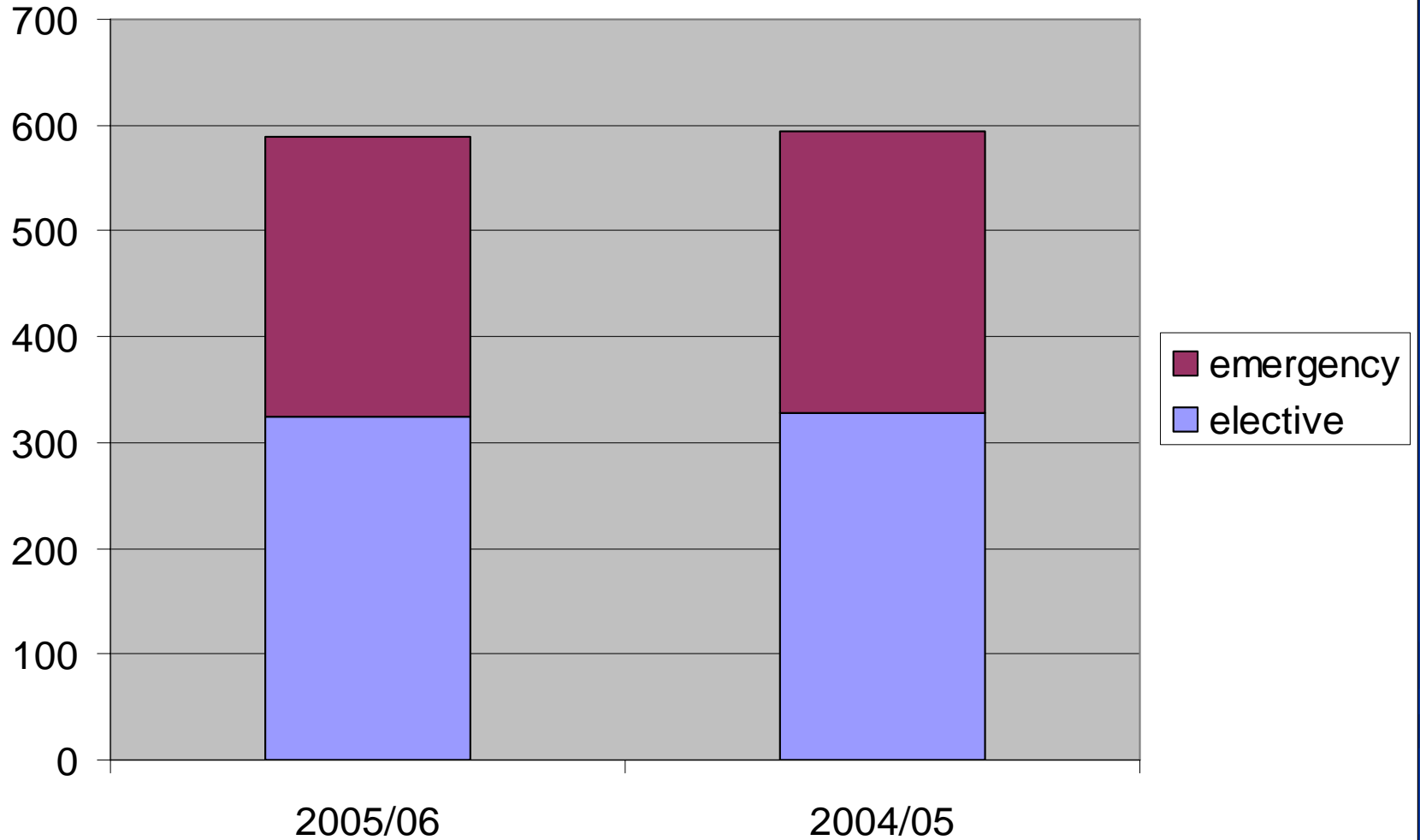
- Stomal therapist
 - Mrs Bernie Hadfield
- Nurse unit manager ward 6 east
 - Ms Jo McCann
- CRS outpatient nurse
 - Ms Jan Pilkington
- Peri-operative coordinator
 - Mrs Virginia Comerford
 - Ms Pat Gagliardi
- Clinical co-directors
 - Mrs Cath Cronin
 - Mr W Johnson

Unit activity

Annual unit activity

	2006	2005	2004	2003	2002
<i>Admissions</i>					
Alfred	589	594	575	542	669
Sandringham	82	88	108	64	109
Total	671	682	683	606	778
<i>Admission type</i>					
Number of procedures	476	508	536	526	521
Day case	211	241	196	189	
Non-operative admission	148	174	140	98	183
<i>Deaths</i>					
Operative	0	11	6	10	6
Non-operative	3	3	1	2	6
Total	3	14	7	12	12

Admissions



WIES data

		2005/06	2004/05	2003/04
<i>WIES</i>	Sameday	95	53	43
	Multiday	1155	1170	1058
	Elective	761	643	667
	Emergency	489	580	434
	Total	1250	1223	1101
<i>Average LOS</i>		8.6	8.6	7.9

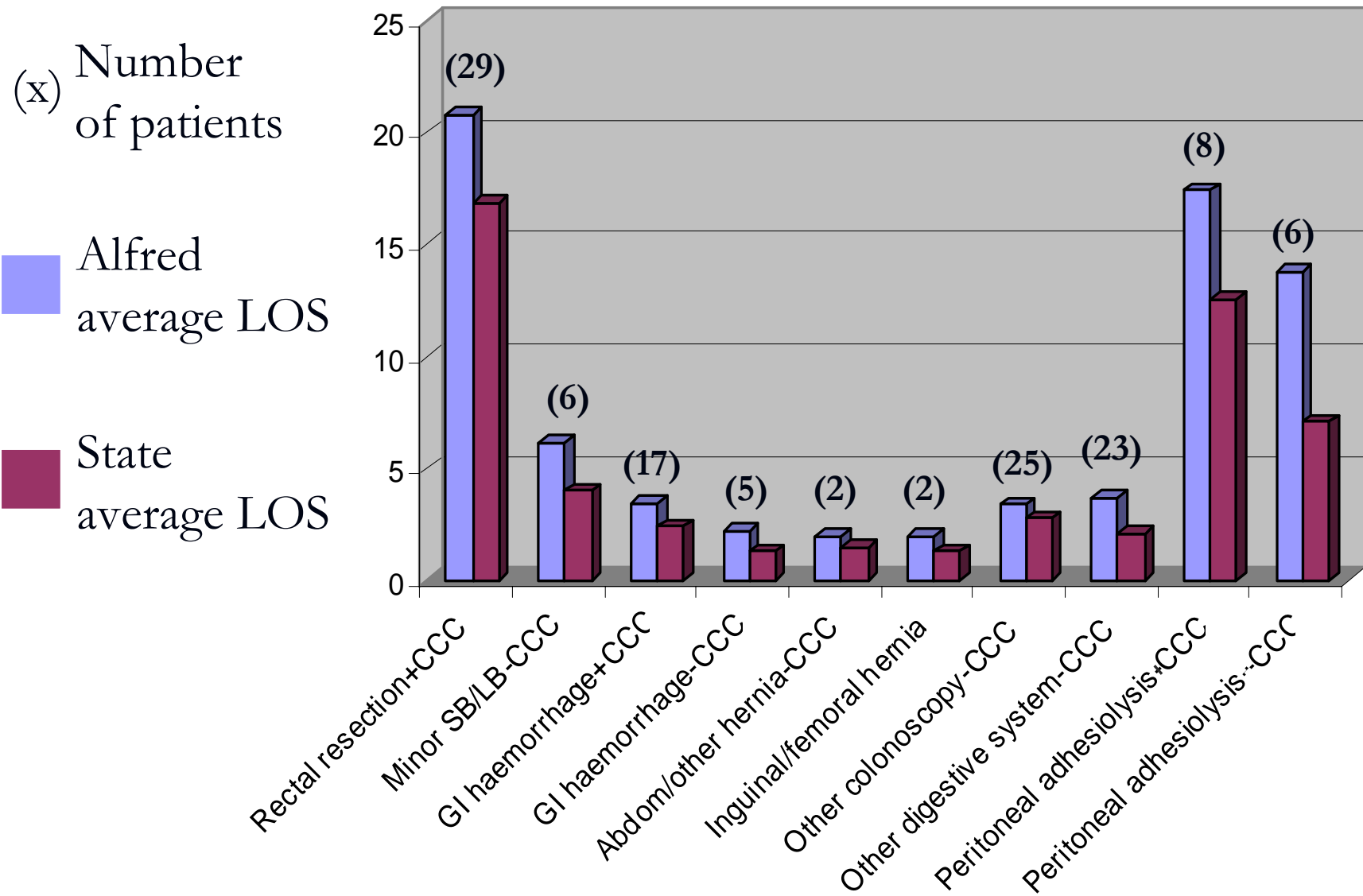
Length of stay

<i>Description</i>	Number of discharges	Average length of stay (Alfred)	Average length of stay (State)
Rectal resection-CCC	23	8	10
Major SB/LB procedures+CCC	53	15	16
Major SB/LB procedures-CCC	28	6	8
Minor SB/LB procedures+CCC	18	9	9
Appendicectomy+CCC	4	6	7
Appendicectomy-CCC	14	2	3
Abdominal/other herniae+CCC	5	3	3
Anal/stomal procedures+CCC	23	3	5
Anal/stomal procedures-CCC	57	1	2

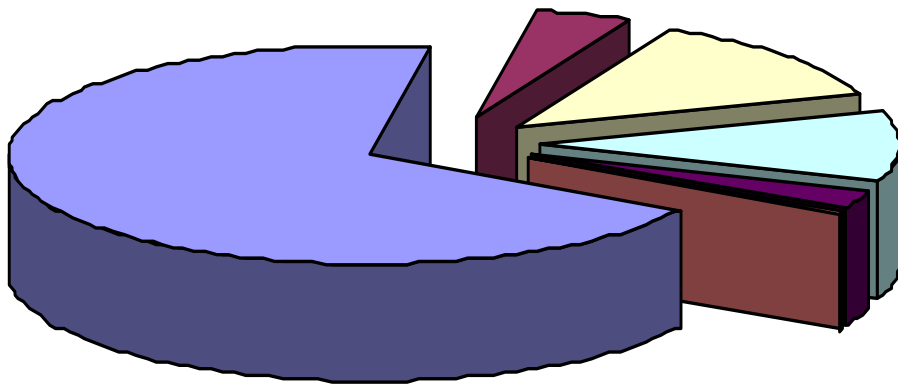
Length of stay

<i>Description</i>	Number of discharges	Average length of stay (Alfred)	Average length of stay (State)
Other colonoscopy+CCC	10	9	10
Other colonoscopy, sameday	21	1	1
Digestive malignancy+CCC	3	7	7
Digestive malignancy-CCC	8	1	5
GI obstruction+CCC	23	4	6
GI obstruction-CCC	19	2	3
Abdominal pain+CCC	5	3	3
Abdominal pain-CCC	14	1	2
Other digestive system-CCC	22	3	4

Length of stay



Theatre bookings



- Elective (330)
- Non-elective > 12 hours (20)
- Priority non-elective < 12 hours (62)
- Urgent < 4 hours (51)
- Time critical < 1 hour (12)
- Immediately life-threatening < 15 minutes (1)

Colonic resections

	2006	2005	2004
Right hemicolectomy	29	24	32
Segmental resection	-	7	-
Left hemicolectomy	5	4	4
Total colectomy	3	4	7
Subtotal colectomy	3	2	-
<i>Total</i>	40	41	43

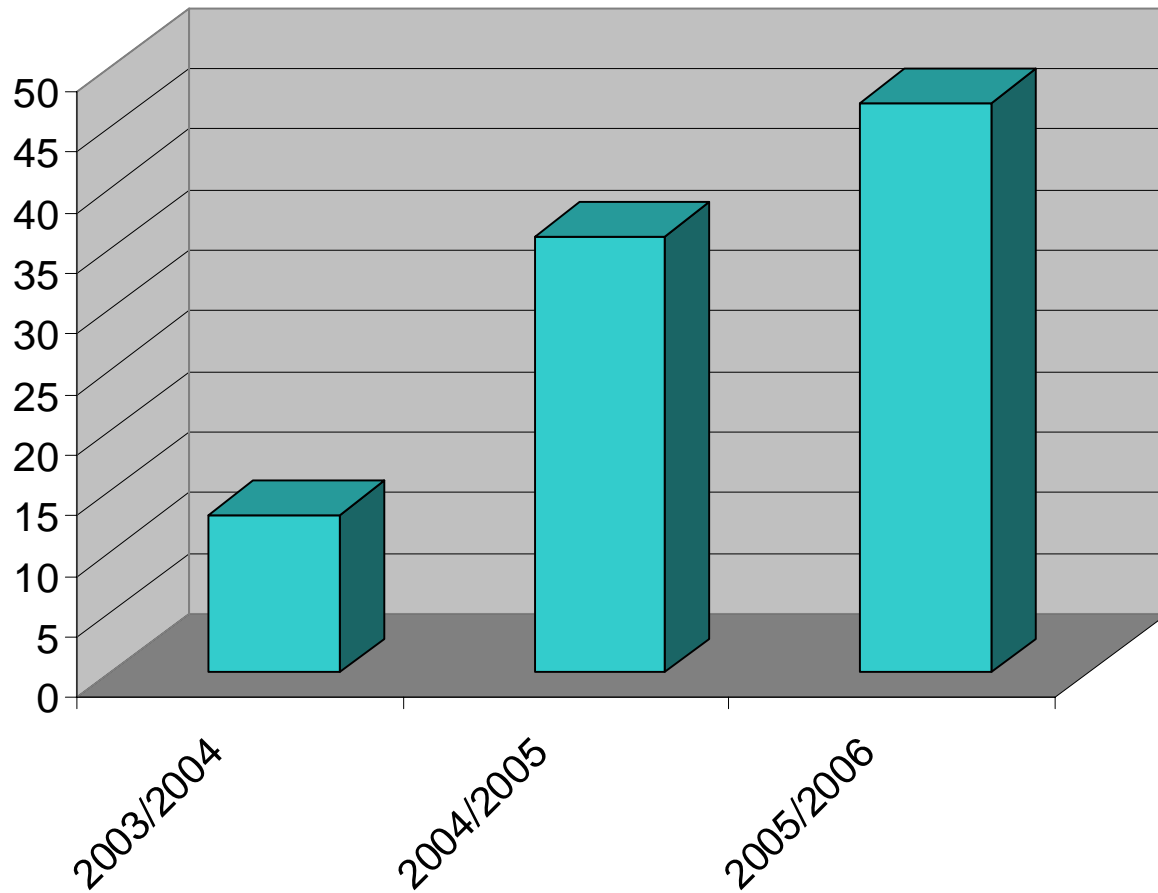
Rectal resections

	2006	2005	2004
High anterior	25	20	29
Low anterior	4	10	-
Ultralow anterior	8	16	-
APER	3	4	3
Proctocolectomy	6	3	-
Rectopexy	-	2	-
TEMS	8	-	-
<i>Total</i>	<i>54</i>	<i>53</i>	<i>32</i>

Anal procedures

	2006
EUA/anal operations	223
Stoma formation	8
Stoma closure	25
Prolapse procedures	3

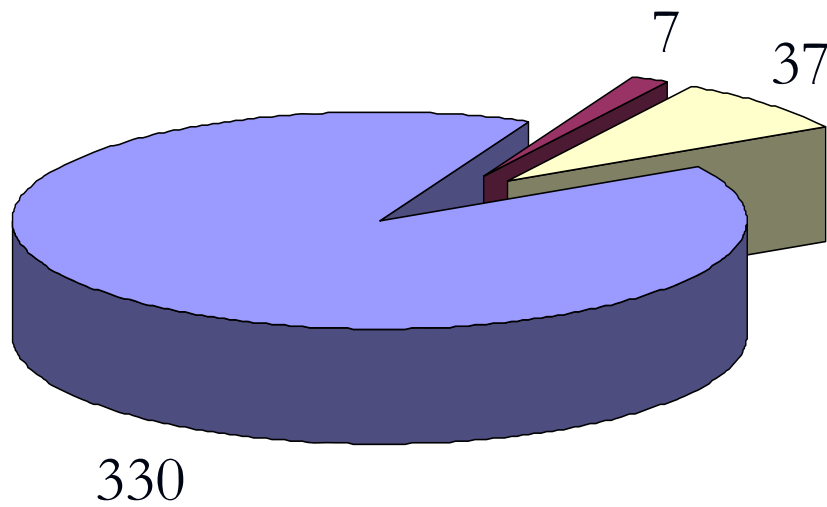
Laparoscopic cases



Laparoscopic cases

	2006	2005	2004
Right hemicolectomy	16	7	
Sigmoid colectomy	1	2	
Anterior resection	3	7	
Proctocolectomy	1		
Total/subtotal colectomy		2	
Resection rectopexy		1	
Reversal of Hartmann's		2	
Appendicectomy	8	11	1
Stoma formation	4	2	
Diagnostic laparoscopy	8		
Others	6	2	12

Endoscopies



4C



Theatre (elective)

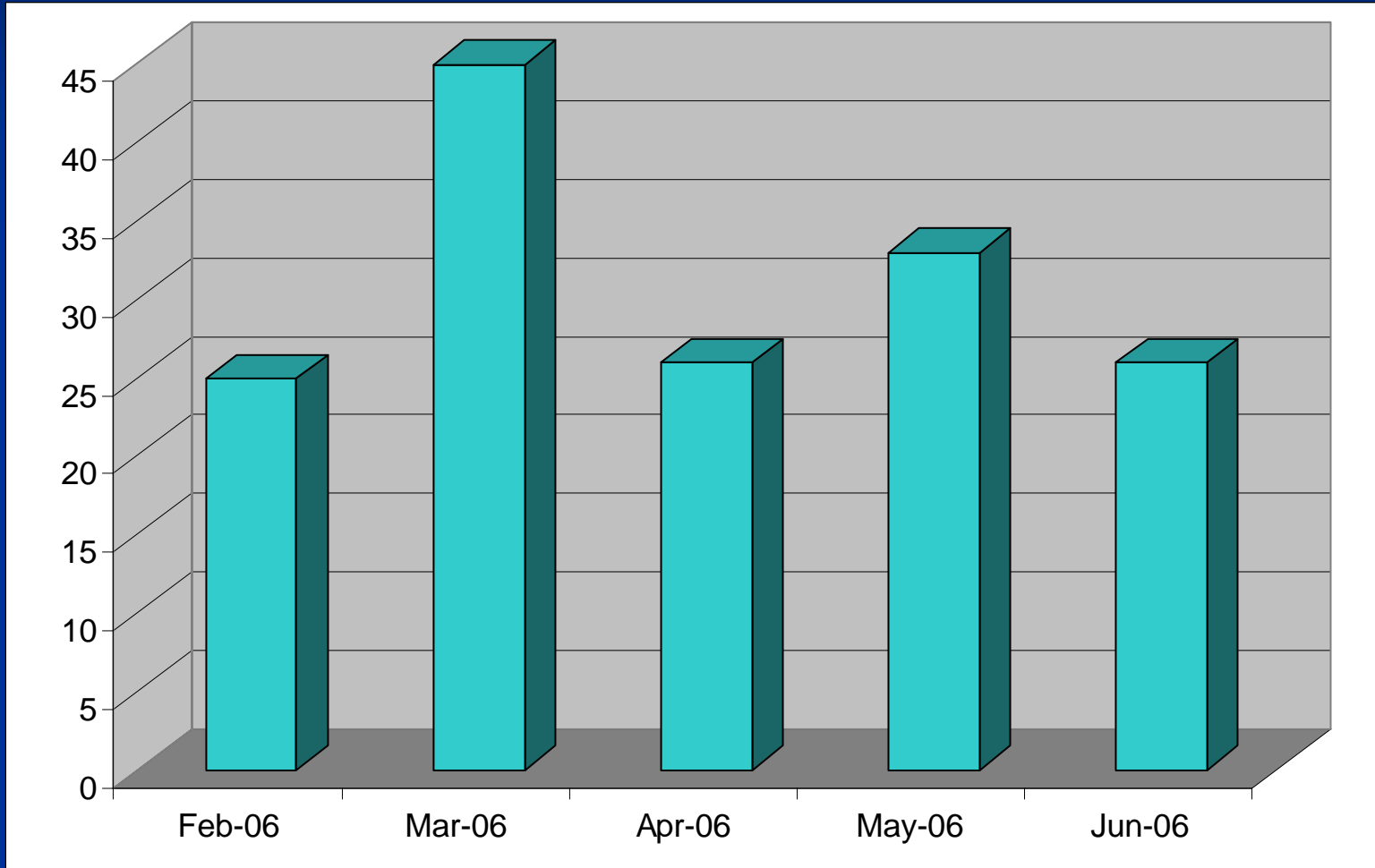


Theatre (emergency)

Outpatient attendances

	2005/06	2004/05	2003/04
Total attendance	1793	1847	1824
Non-attendance (%)	14	18	

Non-operative referrals



Research Programme

- Pathology reporting in rectal cancer
- Malignant transformation of anal intraepithelial neoplasia
- South Melbourne integrated colorectal cancer service timeline study
- Staging of circumferential rectal cancers
- Cyclooxygenase-2 and anal intraepithelial neoplasia
- Transanal endoscopic microsurgery